



US011111546B2

(12) **United States Patent**
Parr et al.

(10) **Patent No.:** **US 11,111,546 B2**
(45) **Date of Patent:** ***Sep. 7, 2021**

(54) **3.4 KB MITOCHONDRIAL DNA DELETION FOR USE IN THE DETECTION OF CANCER**

(71) Applicant: **MDNA Life Sciences Inc.**, Wilmington, DE (US)

(72) Inventors: **Ryan L. Parr**, Thunder Bay (CA); **Robert Thayer**, Thunder Bay (CA); **Gabriel D. Dakubo**, Thunder Bay (CA); **Jennifer Creed**, Broomfield, CO (US); **Kerry Robinson**, Thunder Bay (CA); **Andrea Maggrah**, Thunder Bay (CA); **Brian Reguly**, Thunder Bay (CA)

(73) Assignee: **MDNA Life Sciences, Inc.**, Wilmington, DE (US)

(*) Notice: Subject to any disclaimer, the term of this patent is extended or adjusted under 35 U.S.C. 154(b) by 136 days.

This patent is subject to a terminal disclaimer.

(21) Appl. No.: **16/429,739**

(22) Filed: **Jun. 3, 2019**

(65) **Prior Publication Data**

US 2019/0323087 A1 Oct. 24, 2019

Related U.S. Application Data

(63) Continuation of application No. 15/470,175, filed on Mar. 27, 2017, now Pat. No. 10,308,987, which is a continuation of application No. 14/874,155, filed on Oct. 2, 2015, now abandoned, which is a continuation of application No. 14/507,027, filed on Oct. 6, 2014, now abandoned, which is a continuation of application No. 12/748,120, filed on Mar. 26, 2010, now abandoned, which is a continuation-in-part of application No. 11/975,390, filed on Oct. 18, 2007, now Pat. No. 8,008,008, which is a continuation of application No. PCT/CA2006/000652, filed on Apr. 18, 2006, application No. 16/429,739, which is a continuation of application No. 15/470,175, filed on Mar. 27, 2017, now Pat. No. 10,308,987, which is a continuation of application No. 14/874,155, filed on Oct. 2, 2015, now abandoned, which is a continuation of application No. 14/507,027, filed on Oct. 6, 2014, now abandoned, which is a continuation of application No. 12/748,120, filed on Mar. 26, 2010, now abandoned, which is a continuation of application No. PCT/CA2007/001711, filed on Sep. 26, 2007.

(60) Provisional application No. 60/789,872, filed on Apr. 7, 2006, provisional application No. 60/721,522, filed on Sep. 29, 2005, provisional application No. 60/672,016, filed on Apr. 18, 2005.

(51) **Int. Cl.**
C12Q 1/6886 (2018.01)
C12Q 1/686 (2018.01)
G01N 33/574 (2006.01)

(52) **U.S. Cl.**
CPC **C12Q 1/6886** (2013.01); **C12Q 1/686** (2013.01); **G01N 33/57415** (2013.01); **G01N 33/57434** (2013.01); **C12Q 2600/112** (2013.01); **C12Q 2600/118** (2013.01); **C12Q 2600/156** (2013.01)

(58) **Field of Classification Search**
None
See application file for complete search history.

(56) **References Cited**

U.S. PATENT DOCUMENTS

3,817,837 A	6/1974	Rubenstein et al.
3,850,752 A	11/1974	Schuurs et al.
3,939,350 A	2/1976	Kronick et al.
3,996,345 A	12/1976	Ullman et al.
4,275,149 A	6/1981	Litman et al.
4,277,437 A	7/1981	Maggio
4,366,241 A	12/1982	Tom et al.
5,565,323 A	10/1996	Parker et al.
6,344,322 B1	2/2002	Polyak et al.
8,008,008 B2*	8/2011	Parr A61P 35/00 435/6.12
10,308,987 B2*	6/2019	Parr C12Q 1/6886
2002/0155438 A1	10/2002	Simpson et al.
2003/0092019 A1	5/2003	Meyer et al.
2004/0191769 A1	9/2004	Marino et al.
2005/0026167 A1	2/2005	Birch-Machin et al.
2005/0244851 A1	11/2005	Blume et al.

FOREIGN PATENT DOCUMENTS

CA	2356536	2/2003
EP	0812922	12/1997

(Continued)

OTHER PUBLICATIONS

Ahern, *The Scientist* 9 (15), 20 (1995);*
(Continued)

Primary Examiner — Ethan C Whisenant
(74) *Attorney, Agent, or Firm* — Simpson & Simpson, PLLC

(57) **ABSTRACT**

A method is provided for detecting a cancer in an individual, the method comprising detection of a deletion in the nucleic acid sequence between residues 10743 and 14125 in mitochondrial DNA by extracting the mitochondrial DNA (mtDNA) from the biological sample obtained from the individual and quantifying the amount of mtDNA in the sample having a deletion in the nucleic acid sequence between approximately residues 10743 and 14125 of the mtDNA genome, and comparing the amount of mtDNA in the sample having the deletion to at least one known reference sample. Kits for conducting the method are also provided.

28 Claims, 7 Drawing Sheets
Specification includes a Sequence Listing.

(56) **References Cited**

FOREIGN PATENT DOCUMENTS

EP	1 266 970	12/2002
JP	11-113597	4/1999
WO	WO 98/23632	6/1998
WO	WO 00/63441	10/2000
WO	WO 01/68923	9/2001
WO	WO 02/22873	3/2002
WO	WO 02/101086	12/2002
WO	WO 03/078661	9/2003
WO	WO 06/11029	10/2010

OTHER PUBLICATIONS

Armstrong, B.K. (2004). How sun exposure causes skin cancer: an epidemiological perspective. In *Prevention of Skin Cancer*, Hill, D., Elwood, J.M. & English, D.J. (eds), vol. 3. pp. 89-116. Cancer Prevention—Cancer Causes. Kluwer Academic Publishers.

Armstrong, B.K. & Kricke, A. (2001). The epidemiology of UV induced skin cancer. *J Photochem Photobiol B*, 63, 8-18.

Berneburg, M., Gattermann, N., Stege, H., Grewe, M., Vogelsang, K., Ruzicka, T. & Krutmann, J. (1997). Chronically ultraviolet-exposed human skin shows a higher mutation frequency of mitochondrial DNA as compared to unexposed skin and the hematopoietic system. *Photochem Photobiol*, 66, 271-5.

Berneburg, M., Plettenberg, H., Medve-Konig, K., Pfahlberg, A., Gers-Barlag, H., Gefeller, O. & Krutmann, J. (2004). Induction of the photoaging-associated mitochondrial common deletion *in vivo* in normal human skin. *J Invest Dermatol*, 122, 1277-83.

Boukamp, P., Petrussevska, R.T., Breitkreutz, D., Hornung, J., Markham, A. & Fusenig, N.E. (1988). Normal keratinization in a spontaneously immortalized aneuploid human keratinocyte cell line. *J Cell Biol*, 106, 761-71.

Croteau, D.L. & Bohr, V.A. (1997). Repair of oxidative damage to nuclear and mitochondrial DNA in mammalian cells. *JBiol Chem*, 272, 25409-12.

Degoul, F., Nelson, I., Amselem, S., Romero, N., Obermaier-Kusser, B., Ponsot, G., Marsac, C. & Lestienne, P. (1991). Different mechanisms inferred from sequences of human mitochondrial DNA deletions in ocular myopathies. *Nucleic Acids Res*, 19, 493-6.

Durham, S.E., Krishnan, K.J., Betts, J. & Birch-Machin, M.A. (2003). Mitochondrial DNA damage in non-melanoma skin cancer. *Br J Cancer*, 88, 90-5.

Koch, H., Wittem, K.P. & Bergemann, J. (2001). In human keratinocytes the Common Deletion reflects donor variabilities rather than chronologic aging and can be induced by ultraviolet A irradiation. *J Invest Dermatol*, 117, 892-7.

Ledoux, S.P., Patton, N.J., Avery, L.J. & Wilson, G.L. (1993). Repair of N-methylpurines in the mitochondrial DNA of xeroderma pigmentosum complementation group D cells. *Carcinogenesis*, 14, 913-7.

Mita, S., Rizzuto, R., Moraes, C.T., Shanske, S., Arnaudo, E., Fabrizi, G.M., Koga, Y., Dimauro, S. & Schon, E.A. (1990). Recombination via flanking direct repeats is a major cause of large-scale deletions of human mitochondrial DNA. *Nucleic Acids Res*, 18, 561-7.

Moraes, C.T., Ricci, E., Petruzzella, V., Shanske, S., Dimauro, S., Schon, E.A. & Bonilla, E. (1992). Molecular analysis of the muscle pathology associated with mitochondrial DNA deletions. *Nat Genet*, 1, 359-67.

Moraes, C.T., Sciacco, M., Ricci, E., Tengan, C.H., Hao, H., Bonilla, E., Schon, E.A. & Dimauro, S. (1995). Phenotype-genotype correlations in skeletal muscle of patients with mtDNA deletions. *Muscle & Nerve*, 3, S 150-3.

Schon, E.A., Rizzuto, R., Moraes, C.T., Nakase, H., Zeviani, M. & Dimauro, S. (1989). A direct repeat is a hotspot for large-scale deletion of human mitochondrial DNA. *Science*, 244, 346-9.

Sciacco, M., Bonilla, E., Schon, E.A., Dimauro, S. & Moraes, C.T. (1994). Distribution of wild-type and common deletion forms of

mtDNA in normal and respiration-deficient muscle fibers from patients with mitochondrial myopathy. *Hum Mol Genet*, 3, 13-9.

Shoffner, J.M., Lott, M.T., Voljavec, A.S., Soueidan, S.A., Costigan, D.A. & Wallace, D.C. (1989). Spontaneous Kearns-Sayre/chronic external ophthalmoplegia plus syndrome associated with a mitochondrial DNA deletion: a slip-replication model and metabolic therapy. *Proc Natl Acad Sci USA*, 86, 7952-6.

Alonso, A. C Alves, M.P. Suarez-Mier, C Albarran, L Pereira, L Fernandez De Simon, P. Martin, O Garcia, L Gusmao, M Sancho, A Amorim 2005. *J Clin Pathology* 58: 83-86.

Anderson S, et al., Sequence and Organization of the human mitochondrial genome. *Nature* 290:457-464, 1981.

Andrews RM, et al., Reanalysis and revision of the Cambridge references sequence for human mitochondrial DNA. *Nature Genetics* 23(2):147, 1999.

Berneburg M, et al., Singlet oxygen mediates the UVA-induced generation of the photoaging-associated mitochondrial common deletion. *J. Biol. Chem.* 274(22):15345-15349, 1999.

Berthon P, Valeri A, Cohen-Akeninc A, Drelon E, Paiss T, Woehr G, Latil A et al., Predisposing gene for early-onset prostate cancer, localized on chromosome. 1q42.2-43. *Am. J. Hum. Genet.*, 62: 1416-1424, 1998.

Birch-Machin MA, et al., Study of skeletal muscle mitochondrial dysfunction. *Methods in Toxicology*, vol. 2, 51-69, 1993.

Birch-Machin MA, et al., Mitochondrial DNA deletions in human skin reflect photo rather than chronologic aging. *J. Invest. Dermatol* 110:149-152 1998.

Birch-Machin MA, Taylor RW, Cochran B, Ackrell BAC, Turnbull DM. Late-onset optic atrophy ataxia, and myopathy associated with a mutation of a complex II gene. *Ann Neurol* 48: 330-335, 2000(b).

Birch-Machin MA, Mitochondria and skin disease. *Clin. Exp. Dermatol.* 25(2), 141-146, 2000 (c).

Birch-Machin MA and Krishnan K. Abstracts—Mitochondria 2001 Meeting San Diego, CA, Feb. 28-Mar. 2, 2001, 1, p. 45 (2001), p. 46.

Birch-Machin MA, Lindsey J. Lusher M and Krishnan K. Mitochondrion1, 1 (Suppl) 1, S30 (2001).

Bogliolo, M, et al., Detection of the 4977 bp mitochondrial DNA deletion in human atherosclerotic lesions *Mutagenesis*, 14: 77-82, 1999.

Brierley EJ, Johnson MA, Lightowers RN, James O, Turnbull DM., Role of mitochondrial DNA mutations in human aging: Implications for the central nervous system and muscle. *Ann Neurol* 43(2):217-223, 1998.

Brockington, et al., A tandem duplication in the D-loop of human mitochondrial DNA is associated with deletions in mitochondrial myopathies. *Nature Genet* 4:67-71, 1993.

Brown, M.D., et al., Clustering of Caucasian Leber hereditary optic neuropathy patients containing the 11778 or 14484 mutations on mtDNA lineage. *Am J Humn Genet*, 60: 381-387, 1997.

Buttayan R, Sawczuk IS, Benson MC, Siegal JD, Olsson CA., Enhanced expression of the c-myc protooncogene in high grade human prostate cancer. *Prostate* 11:327-337, 1987.

Cairns P, Okami K, Halachmi S, Halachmi N, Esteller M, Herman JG, Jen J et al., Frequent inactivation of PTEN/MMAC1 in primary prostate cancer. *Cancer Res* 57:4997-5000, 1997.

Chinnery PF, Howel N, Turnbull DM. Clinical mitochondrial genetics. *J. Med. Genet.*; *J.Med.Genet.*; 36: 425-436, 1999.

Chinnery PF and Turnbull DM., Mitochondrial DNA and disease. *Lancet* 354 (supplement 1): 17-21, 1999.

Cormier-Daire et al., Mitochondrial DNA rearrangements with onset as chronic diarrhea with villous atrophy, *The Journal of Pediatrics*, Jan. 1994, vol. 124, No. 1, pp. 63-70.

Chomyn A, et al., Melas mutation in mtDNA binding-site forttranscription termination factor causes defects in protein-synthesis and in respiration but no change in levels upstream and downstream mature transcripts. *Proc. Natl. Acad. Sci. USA* 89(10):4221-4225, 1992.

Corral-Debrinski et al., Association of Mitochondrial-DNA Damage with aging and coronary atherosclerotic heart-disease. *Mutat Res*, 275: 169-180, 1992.

(56)

References Cited

OTHER PUBLICATIONS

- Cortopassi G. A. and Amheim, N. Detection of a specific mitochondrial DNA deletion in tissues of older humans, *Nucleic Acids Research*. 18, 6927-6933 1990.
- Cortopassi G, Wang E., Modelling the effects of age-related mtDNA mutation accumulation-complex-I deficiency, superoxide and cell-death. *Biochim Biophys Acta* 1271(1):171-176,1995.
- Croteau DL, Stierum RH, Bohr VA. Mitochondrial DNA repair pathways. *Mutat Res* 434(3):137-148, 1999.
- Easton RD, Merriwether AD, Crews DE, and Ferrell RE., mtDNA variation in the Yanomami Evidence for additional New World founding lineages. *Am. J. Hum. Genet.* 59:213-225, 1996.
- Fahn H, Wang L, Hseith R, Chang S, Kao S, Huang M, and Wei Y. Age-related 4977 bp Deletion in Human Lung Mitochondrial DNA. *American Journal of Respiratory Critical Care Medicine*, 154:1141-1145, 1996.
- Finogold D., *Diagnosis: The Promise of DNA Analysis in Understanding Mitochondrial Disease; Mitochondrial and Metabolic Disorders*, p. 12, 1997.
- Flanagan N, et al., Pleiotropic effects of the melanocortin 1 receptor (MC1R) gene on human pigmentation. *Hum Mol Genet* 9 (17):2531-2537, 2000.
- Petros, John A. et al., mtDNA mutations increase tumorigenicity in prostate cancer, *PNAS*, Jan. 18, 2005, vol. 102, No. 3, pp. 719-724.
- Flanagan N, Ray AJ, Todd C, Birch-Machin MA and Rees JL. The relation between melanocortin 1 receptor genotype and experimentally assessed ultraviolet radiation sensitivity. *J Invest. Dermatol* (2001) 117(5) 1314-1317.
- Gattermann, N, Berneburg, M, Heinisch, J, Aul, C, Schneider, W., Detection of the ageing-associated 5-kb common deletion of mitochondrial-DNA in blood and bone marrow of hematologically normal adults-absence of the deletion in clonal bone marrow disorders. *Leukemia* 9(10): 1704-10, 1995.
- Habano W, Nakamura S, Sugai T., Microsatellite instability in the mitochondrial DNA of colorectal carcinomas: Evidence for mismatch repair systems in mitochondrial genome, *Oncogene* 17 (15):1931-1937, 1998.
- Harding RM, et al., Evidence for variable selective pressures at MC1R. *Am. J. Hum. Genet.* 66, 1351-1361, 2000.
- Hattori et al, Age-dependant increase in deleted mitochondrial DNA in the human heart: possible contributory factor to presbycardia, *AM. Heart J.*, 121, 1735-1742, 1991.
- Hayashi J, Ohta S, Kikuchi A, Takemitsu M, Goto Y, Nonaka I., Introduction of disease-related mitochondrial-DNA deletions into hela-cells lacking mitochondrial-DNA results in mitochondrial dysfunction. *Proc Natl Aced Sci USA* 88 (23): 10614-10618, 1991.
- Hayward SW, Grossfeld GD, Tlsty TD, Cunha GR., Genetic and epigenetic influences in prostatic carcinogenesis—(Review). *Int J Oncol* 13:35-47, 1998.
- Healy E, Birch-Machin MA, Rees JL. Chapter 11. The Human Melanocortin 1 Receptor Gene. In *The Melanocortin Receptors* (Cone RD (ed)). Humana Press Inc. New Jersey, USA, 1999.
- Healy E, et al. Melanocortin-1-receptor gene and sun sensitivity in individuals without red hair. *Lancet* 355. 9209, 1072-1073, 2000.
- Hsieh, RH, et al., Age-Dependent Respiratory Function Decline and DNA Deletions in Human Muscle Mitochondria, *Biochemistry and Molecular Biology Int'l*, vol. 32, No. 6, Apr. 1994, pp. 1009-1022.
- Ikebe et al., Increase of deleted mitochondrial DNA in the striatum in Parkinson's disease and senescence, *Biochem. Biophys. Res. Commun.* 170, 1044-1048, 1990.
- Katayama et al., Deleted mitochondrial DNA in the skeletal muscle of aged individuals, *Biochem. Int.*, 25, 47-56 1991.
- Kleinle S, et al., Detection and characterization of mitochondrial DNA rearrangements in Pearson and Kearns-Sayre syndromes by PCR. *Human Genet.* 100:643-650, 1997.
- Konishi N, Cho M, Yamamoto K, Hiasa Y. Genetic changes in prostate cancer. *Pathol. Int.* 47:735-747, 1997.
- Krishnan K and Birch-Machin MA. British Society for Investigative Dermatology Annual Meeting. *British Journal of Dermatology* (2002), 146, (p. 723).
- Ledoux SP, et al. Repair of alkylation and oxidative damage in mitochondrial DNA. *Mutat Res* 434(3):149-159, 1999.
- Lee HC, et al. Ageing-associated tandem duplications in the D-loop of mitochondrial DNA of human muscle. *FEBS Letters* 354:79-83, 1994.
- Lee HC, Lu CY, Fahn HJ, Wei YHu. Aging-and smoking-associated alteration in the relative content of mitochondrial DNA in human lung. *Federation of European Biochemical Societies*, 441:292-296, 1998.
- Lee HC, et al. Concurrent increase of oxidative DNA damage and lipid peroxidation together with mitochondrial DNA mutation in human lung tissues during aging—Smoking enhances oxidative stress on the aged tissues. *Arch. Biochem. Biophys.* 362(2): 309-16, 1999.
- Liu CS, Kao SH, Wei YH. Smoking-Associated Mitochondrial DNA Mutations in Human Hair Follicles. *Environ. Mol. Mutagen* 30(1): 47-55, 1997.
- Lopez, J.V. et al. (1994) Numt, a recent transfer and tandem amplification of mitochondrial DNA to the nuclear genome of the cat. *J. Mol. Evol.* 39, 174-190.
- Lowes S, Krishnan K, Lindsey J, Lusher M and Brich-Machin MA. British Society for Investigative Dermatology Annual Meeting. *British Journal of Dermatology* (2002), 146, 736.
- Meibner C, Von Wurmb N, Oehmichen M., Detection of the age-dependent 4977 bp deletion of mitochondrial DNA; a pilot study. *Int. J. Legal Med.* 110: 288-291, 1997.
- Michikawa Y, Mazzucchelli F, Bresolin N, Scarlato G, Attardi G., Aging-Dependent Large Accumulation of Point Mutations in the Human mtDNA Control Region for Replication. *Science* 286: 774-779, 1999.
- Miquel J, De Juan E, Sevilla I. Oxygen-induced mitochondrial damage and aging. *EXS* 62:47-57, 1992.
- Nachman MW, Brown WM, Stoneking M, Aquardo CF., Nonneutral Mitochondrial DNA Variation in Humans and Chimpanzees. *Genetics* 142:953-963, 1996.
- Naviaux, RK., *Mitochondrial Disease—Primary Care Physician's Guide*. Psy-Ed. Corp D/B/A Exceptional Parents Guide: 3-10, 1997.
- Yu, B, et al.; DNA mutation detection using denaturing high-performance liquid chemoatography (DHPLC). *Current protocols in human genetics* 19, 7.10.1-14, 1998.
- Ozen M, et al., Telomeric DNA Marker for Human Prostate Cancer Development?. *Prostate* 36:264-271, 1998.
- Pang et al., Human Skin Mitochondrial DNA Deletions Associated with Light Exposure. *Arch. Biochem. Biophys.* 312:(2), 534-538, 1994.
- Parsons TJ, et al., A high observed substitution rate in the human mitochondrial DNA control region. *Nature Genet.* 15 (4):363-368, 1997.
- Pascucci B, et al., DNA repair of UV photoproducts and mutagenesis in human mitochondrial DNA. *J.Mol.Biol.* 273 (2):417-427, 1997.
- Penta JS, Johnson FM, Wachsman JT, Copeland, W.C., Mitochondrial DNA in human malignancy, *Mut. Res.* 488, 119-133, 2001.
- Polyak K, et al., Somatic mutations of the mitochondrial genome in human colorectal tumours. *Nature Genet.* 20 (3):291-293, 1998.
- Harman, K.E. et al., Defining Target Antigens in Linear IgA Disease Using Skin From Patients with Inherited Genodermatoses as Substrates for Indirect Immunofluorescence Microscopy; *Br. J. of Derm.* 138, p. 733 (1998).
- Ray AJ, et al. Abstract of the British Society for Investigative Dermatology, Annual Meeting—Cardiff, Apr. 7-9, 1999, *Brit.J. Dermatol.*140:788, 1999.
- Ray AJ, Turner R, Nikaido O, Rees JL, Birch-Machin MA., The spectrum of mitochondrial DNA deletions is a ubiquitous marker of ultraviolet radiation exposure in human skin. *J. Invest. Dermatol* 115(4):674-679, 2000.
- Rees JL, Skin cancer [Gorlin's Syndrome], In: *The Genetic Basis of Human Cancer*, eds Vogelstein B, Kinzler K. New York: McGraw-Hill, pp. 527-536, 1998.
- Rehman I, Quinn AJ, Healy E, Rees JL. High-frequency of loss of heterozygosity in actinic keratoses, a usually benign disease. *Lancet* 344: 788-789, 1994.
- Rehman I, Takata M, Wu YY, Rees JL. Genetic change in actinic keratoses. *Oncogene* 12: 2483-2490, 1996.

(56)

References Cited

OTHER PUBLICATIONS

- SAS Enterprise Mining Users Guide, SAS Inc., 2000.
- Sawyer E, Van Houten B., Repair of DNA damage in mitochondria. *Mutation Res*: 434(3):161-176, 1999.
- Schurr TG, Ballinger SW, Gan Y, Hodge JA, Merriwether DA, Lawrence DN, Knowler WC, Weiss KM, and Wallace DC., Amerindian Mitochondrial DNAs Have Rare Asian Mutations at high Frequencies, Suggesting They Derived from Four Primary Maternal Lineages. *Am. J. Hum. Genet.* 46:613-623, 1990.
- Seidman, M.D. et al., Mitochondrial DNA deletions associated with aging and presbycusis. *Arch. Otolaryngol Head Neck Surg.*, 123: 1039-1045, 1997.
- Shankey TV, Jin JK, Dougherty S, Flanigan RC, Graham S, Pyle JM., DNA-ploidy and proliferation heterogeneity in human prostate cancers. *Cytometry* 21:30-39, 1995.
- Shay JW, Werbin H., Are Mitochondrial DNA Mutations Involved in the Carcinogenic Process?. *Mutat. Res*:186: p. 149-160, 1987.
- Sherrat EJ, Thomas AW, Alcolado. Mitochondrial DNA defects: A widening clinical spectrum of disorders. *J.C., Clin. Sci.* 92:225-235, 1997.
- Shoffner JM, Brown MD, Torroni A, Lott MT, Cabell MF, Mirra SS, Beal MF, Yang C, Gearing M, Salvo R, Watts RL, Juncos JL, Hansen LA, Crain BJ, Fayad M, Reckford CL, and Wallace DC., Mitochondrial DNA Variants Observed in Alzheimer Disease and Parkinson Disease Patients, *Genomics* 17: 171-184, 1993.
- Smith DG, Malhi RS, Eshleman J, Lorenz JG and Kaestle FA., Distribution of mtDNA haplogroup X among Native North Americans. *Am. J. Hum. Genet.* 110:271-284, 1999.
- Smith R, Birch-Machin MA, Rees JL. Melanocortin 1 receptor variants in an Irish population. *J. Invest. Dermatol.* 111: (1) Jul. 1998, 101-104.
- Tamura S, et al. Mutations in mitochondrial control region DNA in gastric tumours of Japanese patients. *Eur.J.Cancer [A]* 35 (2):316-319, 1999.
- Tanaka, M. et al, 1996, Automated sequencing of mtDNA, *Methods Enzymol.* 264: 407-421.
- Taniike, M. et al., Mitochondrial transfer rnaile mutation in fatal cardiomyopathy. *BioChem BioPhys Res Comun*, 186: 47-53, 1992.
- Taylor RW, Birch-Machin MA, Bartlett K, Turnbull DM., The control of mitoch. oxidations by complex-III in rat muscle and liver-mitochondria-implications for our understanding of mitochondrial cytopathies in man. *J Biol Chem*, 269, 3523-3528 1994.
- Torii K. et al., Aging-associated deletions of human diaphragmatic mitochondrial DNA, *Am. J. Respir. Cel.l Mol. Biol.* in press 1992, p. 543-549.
- Valnot, Isabelle, et al., A mitochondrial cytochrome b mutation but no mutations of nuclearly encoded subunits in ubiquinol cytochrome c reductase (complex III) deficiency, *Human Genetics* (1999) 104: 460-466.
- Van Den Bosch BJC, et al., Mutation analysis of the entire mitochondrial genome using denaturing high performance liquid chromatography. *Nucleic Acids Res.* 28: 89, 2000.
- Von Wurmb, N, Oehmichen, M, Meissner, C., Demonstration of the 4977 bp deletion in human mitochondrial DNA from intravital and postmortem blood. *Mutat Res.* 422:247-254, 1998.
- Wallace DC., Diseases of the mitochondrial-DNA. *Annu Rev Biochem*, 61: 1176-1212, 1992.
- Wallace DC. Mitochondrial-DNA sequence variation in human-evolution and disease. *Proc. Natl. Acad. Sci. USA* 91: 8739-8746, 1994.
- Wald and Wallace, D.C., Mitochondrial Diseases in man and Mouse. *Science*, 5(283): 1482-1497, 1999.
- Wallace et al., Mitochondrial DNA Mutation Associated with Leber's Hereditary Optic Neuropathy, *Science*, 1427-1429; 1988.
- Walsh PC, Partin, AW, Family history facilitates the early diagnosis of prostate carcinoma. *Cancer* 80:Nov. 1, 1997, vol. 80, No. 9; pp. 1871-1874.
- Ward RH, Frazier BL, Dew-Jager K, Paabo S., Extensive mitochondrial diversity within a single amerindian tribe. *Proc. Natl. Acad. Sci. USA* 88:8720-8724, 1991.
- Wei YH, Pang C, You B, Lee H., Tandem Duplications and Large-Scale Deletions of Mitochondrial DNA Are Early Molecular Events of Human Aging Process, *Annals NY Acad. of Sciences* 786:82-101, 1996.
- Wei YH. Mitochondrial DNA Mutations and Oxidative Damage in Aging and Diseases: An Emerging Paradigm of Gerontology and Medicine; *Proc. of the Nat. Sci. Council of the ROC*, vol. 22(2):1998, pp. 55-67 1997.
- Weinstock MA: Epidemiology of ultraviolet radiation. In: JJ Stern RS, MacKie RM and Weinstock MA, Grob (eds) *Epidemiology*, Blackwell (UK). pp. 121-128, 1998.
- Wu & Wallace., The ligation amplification reaction (LAR)—amplification of specific DNA-sequences using sequential rounds of template-dependent ligation. *Genomics*, 4:560, 1989.
- Xu J, et al., Evidence for a prostate cancer susceptibility locus on the X chromosome. *Nature Genet* 20: 175-179,1998.
- Yamaguchi KT, et al., Measurement of free-radicals from smoke-inhalation and oxygen exposure by spin trapping and esr spectroscopy. *Free Radical Res. Commun.* 16(3):167-74, 1992.
- Yeh, J.J., et al., Somatic mitochondrial DNA (mtDNA) mutations in papillary thyroid carcinomas and differential mtDNA sequence variants in cases with thyroid tumours. *Oncogene Journal*, 19: 2060-2066, 2000.
- Yen et al., Ageing-associated 5kb deletion in human liver mitochondrial DNA, *Biochem., Biophys., Res. Commun.*, 178, 124-131 1991.
- Yen et al., Age-dependent 6 kb deletion in human liver mitochondrial DNA, *Biochem. Int.* 26, 457-468 1992.
- Zeviani M, et al. Nucleus-driven Multiple Large-Scale Deletions of the Human Mitochondrial Genome: A New Autosomal Dominant Disease. *Am. J. Hum. Genet.* 47:904-914, 1990.
- Zhang et al., Multiple mitochondrial DNA deletions in an elderly human individual, *FEBS Lett*, 297, 34-38 1992.
- Zhang, C., et al., Occurrence of a Particular Base Substitution (3243 A to G) in Mitochondrial DNA of Tissues of Ageing Humans. *BioChem. BioPhys. Res. Comun.*, 195: 1104-1110, 1993.
- Jessie B et al., "Accumulation of mitochondrial DNA deletions in the aging prostate." *Proceedings of the American Association for Cancer Research Annual*, vol. 42, Mar. 2001, pp. 862-863, XP001153110. 92nd Annual Meeting of the American Association for Cancer Research; New Orleans, LA, USA; Mar. 24-28, 2001. ISSN: 0197-016X.
- Thayer R et al., "Mitochondrial DNA mutations and/or deletions in prostate cancers," *Proceedings of the American Association for Cancer Research Annual*, vol. 42, Mar. 2001, pp. 532-533, XP001153105. 92nd Annual Meeting of the American Association for Cancer Research, New Orleans, LA, USA; Mar. 24-28, 2001. ISSN: 0197-016X.
- Petros JA et al., "Mitochondrial DNA point mutations are common in prostate cancer and enhance malignant phenotype," *Proceedings of the American Association for Cancer Research Annual*, vol. 42, Mar. 2001, p. 517, XP001153111. 92nd Annual Meeting of the American Association for Cancer Research, New Orleans, LA, USA; Mar. 24-28, 2001. ISSN: 0197-016X.
- Jeronimo C. et al., "Mitochondrial mutations in early stage prostate cancer and bodily fluids," *Proceedings of the American Association for Cancer Research Annual*, vol. 42, Mar. 2001, p. 63, XP001153112. 92nd Annual Meeting of the American Association for Cancer Research, New Orleans, LA, USA; Mar. 24-28, 2001. ISSN: 0197-016X.
- Eshaghian A. et al., "Alterations of mitochondrial DNA in aging skin and in non-melanoma skin cancers," *Proceedings of the American Association for Cancer Research Annual*, vol. 43, Mar. 2002, pp. 304-305, XP001153120, 93rd Annual Meeting of the American Association for Cancer Research, San Francisco, California, USA, Apr. 6-10, 2002, ISSN: 0197-016X.
- Hardy et al. Ethnic Differences and Disease Phenotypes. *Science* 2003 vol. 300, p. 737-781.
- Hirschorn et al. A comprehensive review of genetic association studies. *2002 Genetics in Medicine* p. 45-61.
- Lucentini, J., Gene association studies typically wrong, reproducible gene-disease associations are few and far between, *The Scientist*, Dec. 20, 2004, p. 20.

(56)

References Cited

OTHER PUBLICATIONS

- Ioannidis J et al., Replication validity of genetic association studies. *Nature Genetics* 2001 vol. 29 p. 306-309.
- Buzzi et al. mtDNA A3243G MELAS mutation is not associated with multigenerational female migraine. *Neurology* 2000 vol. 54 p. 1005-1007 Abstract.
- Kogelnik Andreas M et al., "MITOMAP: A human mitochondrial genome database—1998 update," *Nucleic Acids Research*, Oxford University Press, Surrey, GB, vol. 26, No. 1, 1998, pp. 112-115, XP002966479, ISSN: 0305-1048.
- Bandelt Hans-Jurgen et al., "What is 'novel' mtDNA mutation- and does 'novelty' really matter?" *Journal of Human Genetics* 2006, vol. 51, No. 12, 2006, pp. 1073-1082, XP002450142, ISSN: 1434-5161.
- Croatian Medical Journal, vol. 42, No. 3, 2001, Thomas J. Parsons et al., "Increasing the forensic discrimination of mitochondrial DNA testing through analysis of the entire mitochondrial DNA genomes", pp. 304-309.
- Nature, vol. 408, Dec. 2000, Max Ingman et al., "Mitochondrial genome variation and the origin of modern humans," pp. 708-713.
- Genomics, vol. 55, 1999, Barbara C. Levin et al., "A human mitochondrial DNA standard reference material for quality control in forensic identification, medical diagnosis, and mutation detection," pp. 135-146.
- Biotechniques, vol. 32, No. 1, Jan. 2002, H. Andreasson et al.: "Mitochondrial Sequence Analysis for Forensic Identification Using Pyrosequencing Technology," pp. 124-133.
- Harbottle et al., Implications of Using the ND1 Gene as a Control Region for Real-Time PCR Analysis of Mitochondrial DNA Deletions in Human Skin. *The Journal of Investigative Dermatology*: 1518-1521, 2004.
- Maitra, A. et al. The Human MitoChip: A High-Throughput Sequencing Microarray for Mitochondrial Mutation Detection. *Genome Res.* May 2004, vol. 14, No. 5, pp. 812-819 (plus cover page), ISSN 1088-9051.
- Krishnan, K.J. et al. The Use of a 3895 bp Mitochondrial DNA Deletion as a Marker for Sunlight Exposure in Human Skin. *J. Invest. Dermatol.* Dec. 2004, vol. 123, No. 6, pp. 1020-1024. ISSN 0022-202X.
- Prithivirajsingh, S. et al. Accumulation of Common Mitochondrial DNA Deletion Induced by Ionizing Radiation. *FEBS Lett.* Aug. 2004, vol. 571, pp. 227-232. ISSN 0014-5793.
- Chabi, B. et al., Quantification of Mitochondrial DNA Deletion, Depletion, and Overreplication: Application to Diagnosis. *Clin. Chem.* Aug. 2003, vol. 49, No. 8, pp. 1309-1317. ISSN 0009-9147.
- Mutation Research, 2000, vol. 468, pp. 35-43. CC to TT mutation in the mitochondrial DNA of normal skin: relationship to ultraviolet exposure.
- Nucleic Acids Res.*, Denaturing high performance liquid chromatography (DHPLC) used in the detection of germline and somatic mutations. vol. 26, No. 6, pp. 1396-1400, 1998.
- Parrella P. et al., Detection of Mitochondrial DNA Mutations in Primary Breast Cancer and Fine-Needle Aspirates, *Cancer Research*, 61, 7623-7626, 2001.
- Chen, J. et al., Extensive Somatic Mitochondrial Mutations in Primary Prostate Cancer Using Laser Capture Microdissection, *Cancer Research*, 62, 6470-6474, 2002.
- Fliss, M. et al., Facile Detection of Mitochondrial DNA Mutations in Tumors and Bodily Fluids, *Science*, 287, 2017-2019, 2000.
- Jeronimo, C. et al., Mitochondrial mutations in early stage prostate cancer and bodily fluids, *Oncogene*, 20, 5195-5198, 2001.
- Chen, J. et al., Simultaneous generation of multiple mitochondrial DNA mutations in human prostate tumors suggests mitochondrial hyper-mutagenesis, *Carcinogenesis*, vol. 24, No. 9, pp. 1481-1487, 2003.
- Bugart, L. et al., Somatic Mitochondrial Mutation in Gastric Cancer, *American Journal of Pathology*, 147, 1105-1111, 1995.
- Jessie, B. et al., Accumulation of mitochondrial DNA deletions in the malignant prostate of patients of different ages, *Experimental Gerontology* 37, 169-174, 2001.
- Zhu, Weizhu, M.D. et al., Large-scale mitochondrial DNA deletion mutations and nuclear genome instability in human breast cancer. *Cancer Detection and Prevention*, 28, pp. 119-126 copyrighted 2004 International Society for Preventative Oncology.
- He, L. et al.; "Detection and quantification of mitochondrial DNA deletions in individual cells by real-time PCR." *Nucleic Acids Research* [online], Jul. 15, 2002 (Jul. 15, 2002) [retrieved on Apr. 3, 2008], vol. 30, No. 14, p. e68, ISSN: 1362-4962. Retrieved from Internet: <URL: <http://nar.oxfordjournals.org/cgi/reprint/30/14e68>>.
- Maki, J. et al.; "Mitochondrial genome deletion aids in the identification of false-and true-negative prostate needle core biopsy specimens." *American Journal of Clinical Pathology*, Jan. 2008, vol. 129, No. 1, pp. 57-66, ISSN: 0002-9173.
- Huoponen, Kirsi, Leber hereditary optic neuropathy: clinical and molecular genetic findings, *Neurogenetics* (2001) 3: 119-125.
- Huang GM, Ng WL, Farkas J, He L, Liang HA, Gordon D, Hood R., *Genomics* 59(2): 178-86, 1999.
- Landis SH, Murray T, Volden S, Wingo PA. *Cancer J. Clin* 49:8-31.
- Mitomap: A human mt genome database (www.gen.emory.edu/mitomap.html).
- Wei YH., *Proceedings of the Nat Sci. Council of the Republic of China.* Apr. 22(2):5567, 1998.
- Woowell DA., National Ambulatory Medical Care Survey: 1997 Summary. Advance data from vital and health statistics; No. 305. Hyattsville, Maryland: National Center for Health Statistics. 1999.
- Harbottle and Ma Birch-Machin A. "Real-time PCR analysis of a 3895 bp mitochondrial DNA deletion in nonmelanoma skin cancer and its use as a quantitative marker for sunlight exposure in human skin." *British Journal of Cancer, Nature Publishing Group, London, GB*, vol. 94, No. 12, Jan. 1, 2006 (Jan. 1, 2006), pp. 1887-1893.
- Linnane, Anthony W. et al., *Mitochondrial Gene Mutation: The Ageing Process and Degenerative Diseases*, 22 *Biochemistry International*, pp. 1067-1076 (1990).
- Modica-Napolitano, Josephine S. et al., *Mitochondria as Targets for Detection and Treatment of Cancer*, 4 *Expert Reviews in Molecular Medicine*. pp. 1-19 (2002).
- Taanman, J.W. et al., *Molecular Mechanisms in Mitochondrial DNA Depletion Syndrome*, 6 *Human Molecular Genetics*. pp. 935-942 (1997).
- Ward, R.H. et al., *Genetic and Linguistic Differentiation in the Americas*, 90 *Proceedings of the National Academy of Sciences*, pp. 10663-10667 (1993).
- Kajander, Olli A., Anja T. Rovio, Kari Majamaa, Joanna Poulton, Johannes N. Spelbrink, Ian J. Holt, Pekka J. Karhunen and Howard T. Jacobs, *Human mtDNA sublimons resemble rearranged mitochondrial genomes found in pathological states*, Sep. 25, 2000, pp. 2821-2835, vol. 9, No. 19, *Human Molecular Genetics*, Oxford University Press.
- Chuanzhong YE et al., Quantitative analysis of mitochondrial DNA 4977-bp deletion in sporadic breast cancer and benign breast diseases. *Breast Cancer Research and Treatment*, vol. 108, No. 3, May 31, 2007 (May 31, 2007), pp. 427-434, XP002591332. ISSN: 0167-6806.
- Tan, Duan-Jun et al., Comprehensive scanning of somatic mitochondrial DNA mutations in breast cancer. *Cancer Research*, vol. 62, No. 4, Feb. 15, 2002 (Feb. 15, 2002), pp. 972-976, XP002591333. ISSN: 0008-5472.

* cited by examiner

Figure 1

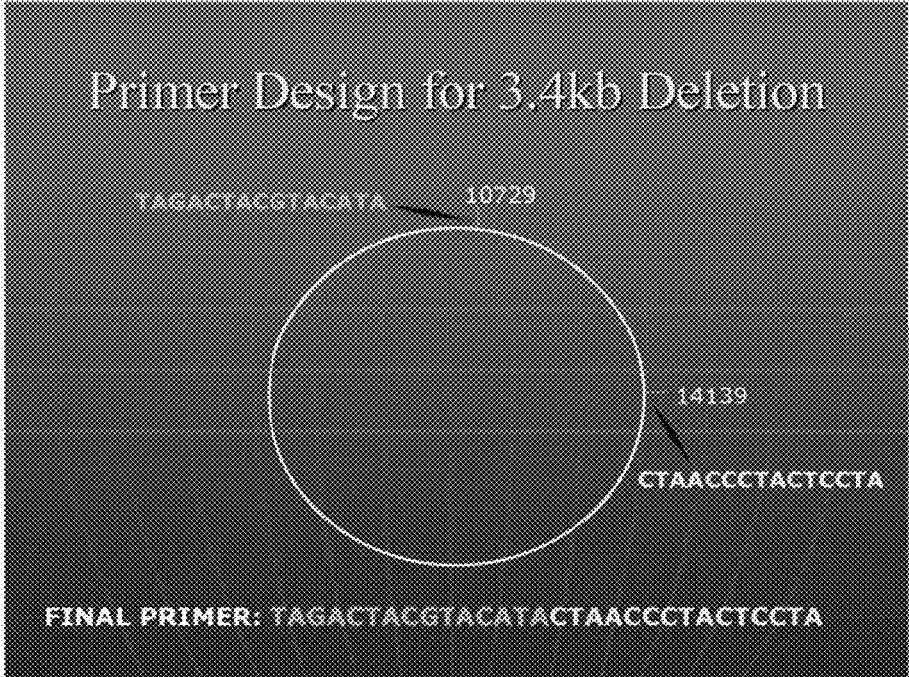


Figure 2

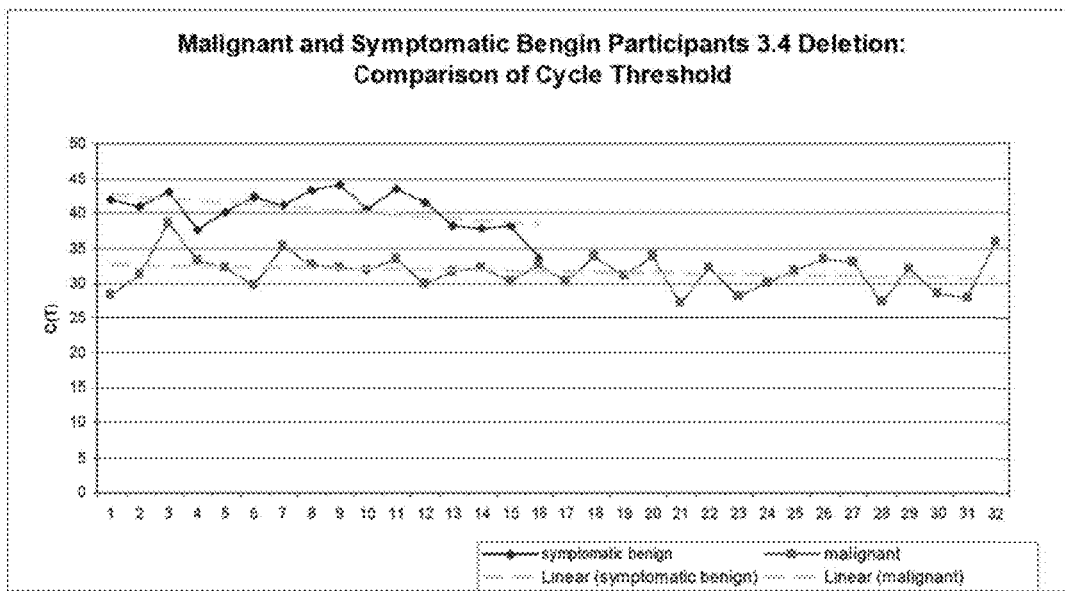


Figure 3

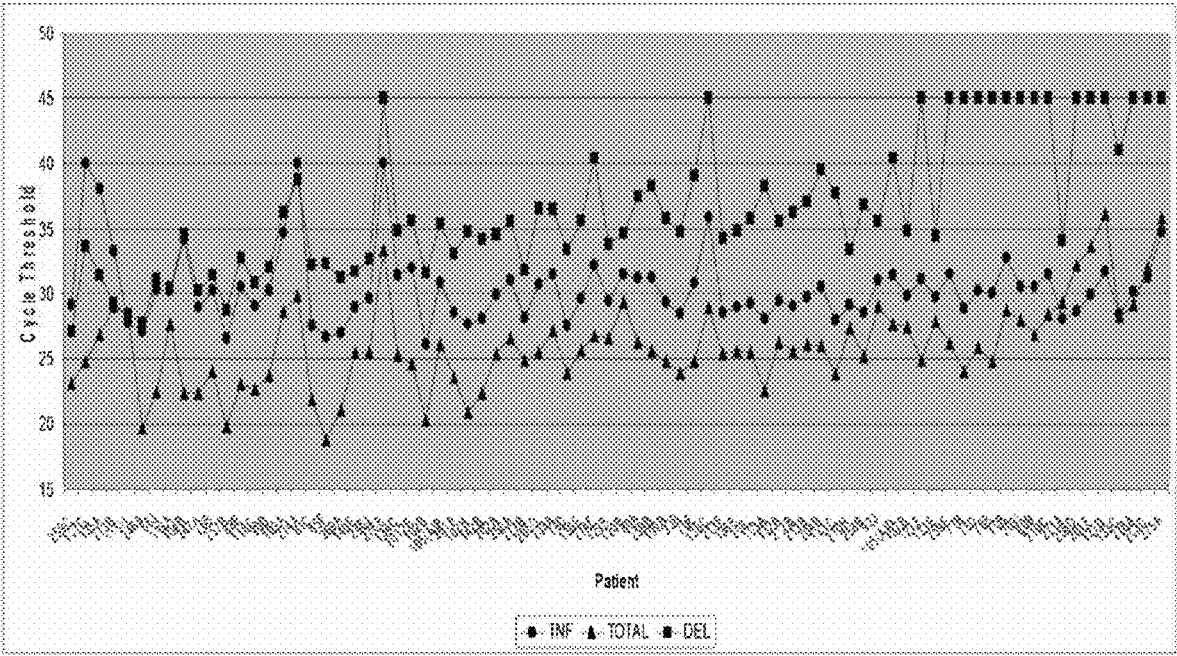


Figure 4

ROC Curve

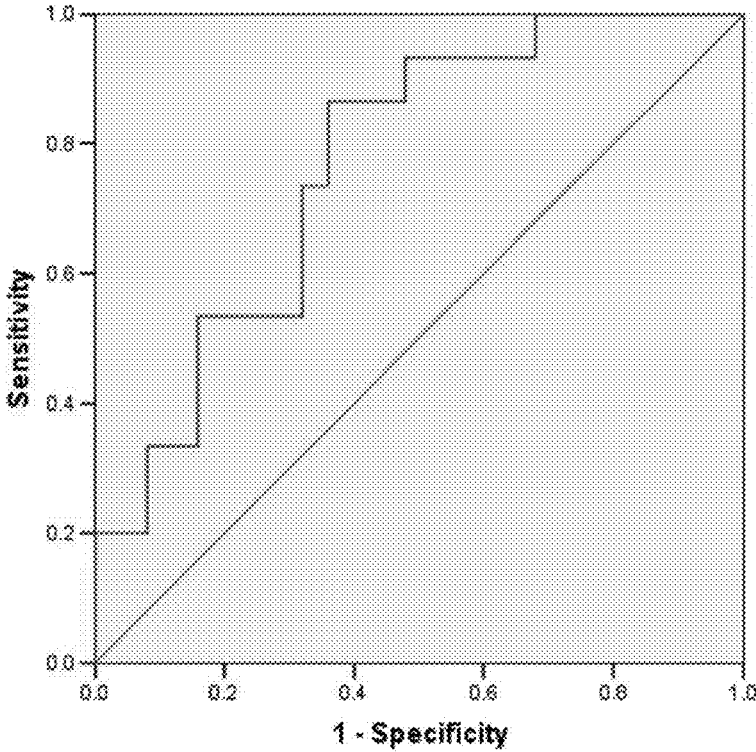


Figure 5

ROC Curve

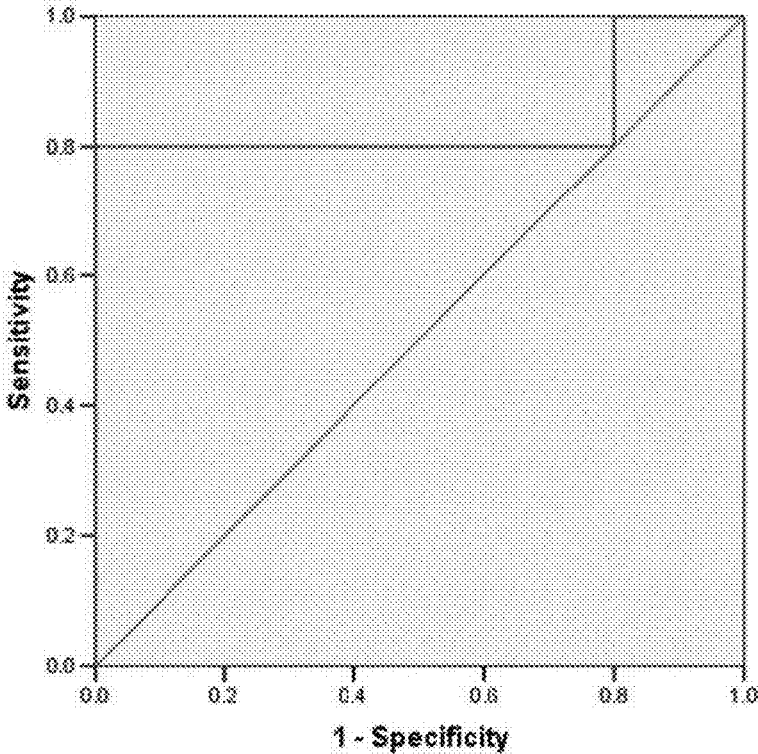


Figure 6

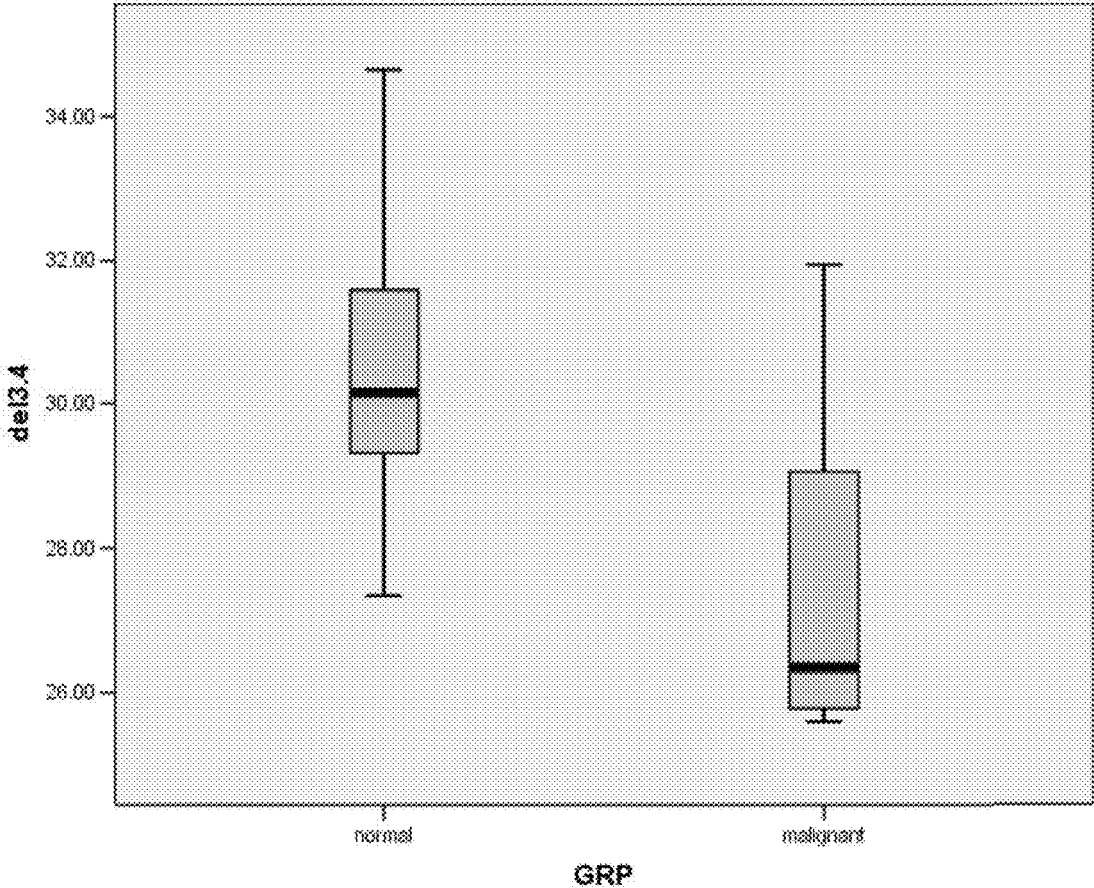


Figure 7

ROC Curve

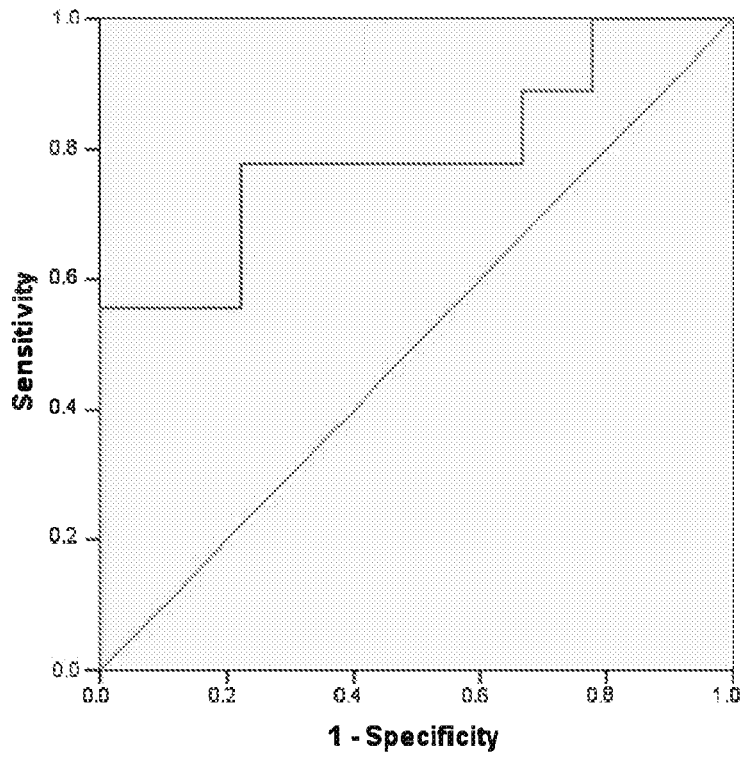
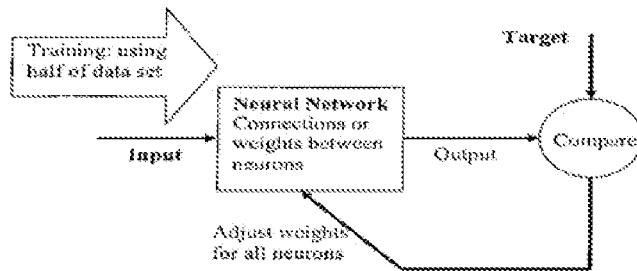


Figure 8

Artificial Neural Network algorithm



3.4 KB MITOCHONDRIAL DNA DELETION FOR USE IN THE DETECTION OF CANCER

CROSS REFERENCE TO RELATED APPLICATIONS

This application is a continuation of U.S. patent application Ser. No. 15/470,175, filed Mar. 27, 2017, which is a continuation of U.S. patent application Ser. No. 14/874,155, filed Oct. 2, 2015, which is a continuation of U.S. patent application Ser. No. 14/507,027, filed Oct. 6, 2014, which is a continuation of U.S. patent application Ser. No. 12/748,120, filed Mar. 26, 2010, which is a continuation-in-part of U.S. patent application Ser. No. 11/975,390, filed Oct. 18, 2007, now U.S. Pat. No. 8,008,008 issued Aug. 30, 2011, which is a continuation of PCT/CA2006/000652, filed Apr. 18, 2006, which PCT application claims the benefit under 35 U.S.C. § 119(e) of U.S. Provisional Patent Application Nos. 60/672,016, filed Apr. 18, 2005; 60/721,522, filed Sep. 29, 2005; and 60/789,872, filed Apr. 7, 2006, which applications are hereby incorporated by reference in their entireties. Additionally, this application is a continuation of U.S. patent application Ser. No. 15/470,175, filed Mar. 27, 2017, which is a continuation of U.S. patent application Ser. No. 14/874,155, filed Oct. 2, 2015, which is a continuation of U.S. patent application Ser. No. 14/507,027 filed Oct. 6, 2014 which is a continuation of U.S. patent application Ser. No. 12/748,120, filed Mar. 26, 2010, which is a continuation of PCT/CA2007/001711, filed Sep. 26, 2007, which applications are hereby incorporated by reference in their entireties.

REFERENCE TO SEQUENCE IDENTIFICATION LISTING

The present application includes a sequence identification listing in .txt format as follows:

Filename: Sequence_Listing.txt

Size: 28 KB

Date Created: Jun. 1, 2019

This sequence identification listing is hereby expressly incorporated by reference in its entirety in the present application.

FIELD OF THE INVENTION

This invention is related to the field of mitochondrial genomics. In particular it is related to a 3.4 kb deletion in the mitochondrial genome and its utility as an indicator of cancer.

BACKGROUND OF THE INVENTION

Mitochondrial DNA (mtDNA) as a Diagnostic Tool

MtDNA sequence dynamics are important diagnostic tools. Mutations in mtDNA are often preliminary indicators of developing disease, often associated with nuclear mutations, and act as biomarkers specifically related to: disease, such as but not limited to, tissue damage and cancer from smoking and exposure to second hand tobacco smoke (Lee et al., 1998; Wei, 1998); longevity, based on accumulation of mitochondrial genome mutations beginning around 20 years of age and increasing thereafter (von Wurmb, 1998); metastatic disease caused by mutation or exposure to carcinogens, mutagens, ultraviolet radiation (Birch-Machin, 2000); osteoarthritis; cardiovascular, Alzheimer, Parkinson disease (Shoffner et al., 1993; Sherratt et al., 1997; Zhang et al., 1998); age associated hearing loss (Seidman et al., 1997);

optic nerve degeneration and cardiac dysrhythmia (Brown et al., 1997; Wallace et al., 1988); chronic progressive external exophthalmoplegia (Taniike et al., 1992); atherosclerosis (Bogliolo et al., 1999); papillary thyroid carcinomas and thyroid tumours (Yeh et al., 2000); as well as others (e.g. Naviaux, 1997; Chinnery and Turnbull, 1999).

Mutations at specific sites of the mitochondrial genome can be associated with certain diseases. For example, mutations at positions 4216, 4217 and 4917 are associated with Leber's Hereditary Optic Neuropathy (LHON) (Mitochondrial Research Society; Huoponen (2001); MitoMap). A mutation at 15452 was found in 5/5 patients to be associated with ubiquinol cytochrome c reductase (complex III) deficiency (Valnot et al. 1999).

Specifically, these mutations or alterations include point mutations (transitions, transversions), deletions (one base to thousands of bases), inversions, duplications, (one base to thousands of bases), recombinations and insertions (one base to thousands of bases). In addition, specific base pair alterations, deletions, or combinations thereof have been found to be associated with early onset of prostate, skin, and lung cancer, as well as aging (e.g. Polyak et al., 1998), premature aging, exposure to carcinogens (Lee et al., 1998), etc.

Prostate Cancer

Prostate cancer is a frequently diagnosed solid tumour that most likely originates in the prostate epithelium (Huang et al. 1999). In 1997, nearly 10 million American men were screened for prostate specific antigen (PSA), the presence of which suggests prostate cancer (Woodwell, 1999). Indeed, this indicates an even higher number of men screened by an initial digital rectal exam (DRE). In the same year, 31 million men had a DRE (Woodwell, 1999). Moreover, the annual number of newly diagnosed cases of prostate cancer in the United States is estimated at 179,000 (Landis et al., 1999). It is the second most commonly diagnosed cancer and second leading cause of cancer mortality in Canadian men. In 1997 prostate cancer accounted for 19,800 of newly diagnosed cancers in Canadian men (28%) (National Cancer Institute of Canada). It is estimated that 30% to 40% of all men over the age of forty-nine (49) have some cancerous prostate cells, yet only 20% to 25% of these men have a clinically significant form of prostate cancer (SpringNet-CE Connection, internet, www.springnet.com/ce/j803a.htm). Prostate cancer exhibits a wide variety of histological behaviour involving both endogenous and exogenous factors, i.e. socio-economic situations, diet, geography, hormonal imbalance, family history and genetic constitution (Konishi et al. 1997; Hayward et al. 1998). Although certain mtDNA alterations have been previously associated with prostate cancer, the need exists for further markers for the detection of prostate cancer.

3.4 kb mtDNA Deletion and the Detection of Prostate Cancer.

In the applicant's pending PCT application bearing publication no. WO/06/111029 (the entire contents of which are incorporated herein by reference) a deletion of a 3379 bp segment of mtDNA was identified through full mitochondrial genome amplification of prostate tissue. The 3379 bp deletion (referred to as the 3.4 kb deletion) was determined to be spanning nucleotides 10744-14124 of the mitochondrial genome. It was determined that the detection of this deletion could be used in the diagnosis of prostate cancer when tissue samples are tested.

The 3.4 kb deletion removes all or part of the following genes from the mtDNA genome: (i) NADH dehydrogenase subunit 4L, (ii) NADH dehydrogenase subunit 4, (iii)

NADH dehydrogenase subunit 5, (iv) tRNA histidine, (v) tRNA serine2, and (vi) tRNA leucine2.

Breast Cancer

Breast cancer is a cancer of the glandular breast tissue and is the fifth most common cause of cancer death. In 2005, breast cancer caused 502,000 deaths (7% of cancer deaths; almost 1% of all deaths) worldwide (World Health Organization Cancer Fact Sheet No. 297). Among women worldwide, breast cancer is the most common cancer and the most common cause of cancer death (World Health Organization Cancer Fact Sheet No. 297). Although certain mtDNA alterations have been previously associated with breast cancer, for example, in Parrella et al. (Cancer Research: 61, 2001), the need exists for further markers for the detection of breast cancer.

BRIEF SUMMARY OF THE INVENTION

In one embodiment, the present invention provides a method of detecting a cancer in an individual comprising;

- a) obtaining a biological sample from the individual;
- b) extracting mitochondrial DNA, mtDNA, from the sample;
- c) quantifying the amount of mtDNA in the sample having a deletion in the nucleic acid sequence spanning approximately residues 10744 and 14124 of the mtDNA genome;
- d) comparing the amount of mtDNA in the sample having the deletion to at least one known reference value.

In one embodiment, the present invention provides a method of detecting a cancer in an individual comprising;

- a) obtaining a biological sample from the individual;
- b) extracting mitochondrial DNA, mtDNA, from the sample;
- c) quantifying the amount of mtDNA in the sample having a deletion in the nucleic acid sequence spanning approximately residues 10744 and 14124 of the mtDNA genome;
- d) comparing the amount of mtDNA in the sample having the deletion to the amount of the deletion in a reference sample of mtDNA from known non-cancerous tissue or body fluid;

wherein an elevated amount of the deletion in the biological sample compared to the reference sample is indicative of cancer.

In one embodiment, the present invention provides a method of detecting a cancer in an individual comprising;

- a) obtaining a biological sample from the individual;
- b) extracting mitochondrial DNA, mtDNA, from the sample;
- c) quantifying the amount of mtDNA in the sample having a deletion in the nucleic acid sequence spanning approximately residues 10744 and 14124 of the mtDNA genome;
- d) comparing the amount of mtDNA in the sample having the deletion to the amount of the deletion in a reference sample of mtDNA from known cancerous tissue or body fluid;

wherein a similar level of the deletion in the biological sample compared to the reference sample is indicative of cancer.

In one embodiment, the present invention provides a method of monitoring an individual for the development of a cancer comprising;

- a) obtaining a biological sample;
- b) extracting mtDNA from the sample;
- c) quantifying the amount of mtDNA in the sample having a deletion in the nucleic acid sequence spanning approximately residues 10744 and 14124 of the mtDNA genome;
- d) repeating steps a) to c) over a duration of time;
- e) wherein an increasing level of the deletion over the duration of time is indicative of cancer.

In one embodiment, the present invention provides a method of detecting a cancer in an individual comprising;

- a) obtaining a biological sample from the individual;
- b) extracting mitochondrial DNA, mtDNA, from the sample;
- c) quantifying the amount of mtDNA in the sample having a sequence corresponding to the sequence identified in SEQ ID NO: 1;
- d) comparing the amount of mtDNA in the sample corresponding to SEQ ID NO: 1 to at least one known reference value.

BRIEF DESCRIPTION OF THE SEVERAL VIEWS OF THE DRAWINGS

An embodiment of the invention will now be described by way of example only with reference to the appended drawings wherein:

FIG. 1 is a schematic diagram showing the design and sequence of a primer useful for the detection of the 3.4 kb deletion. The primer (SEQ ID NO: 2) binds to bases 10729-10743/14125-14139 of the mtDNA genome, wherein the portion of the primer that binds to bases 10729-10743 is depicted in gray in the upper left corner of the figure (nucleotides 1-15 of SEQ ID NO: 2) and the portion of the primer that binds to bases 14125-14139 is depicted in white in the lower right corner of the figure (nucleotides 16-30 of SEQ ID NO: 2);

FIG. 2 is a graph showing a comparison of cycle threshold between malignant and symptomatic benign participants in the 3.4 kb study;

FIG. 3 is a graph showing cycle threshold as related to Example 1;

FIG. 4 shows a ROC curve illustrating the specificity and sensitivity of one embodiment of the present invention;

FIG. 5 shows a ROC curve illustrating the specificity and sensitivity of another embodiment of the present invention;

FIG. 6 shows real-time PCR data relating to 3.4 kb mtDNA deletion levels associated with breast cancer; and,

FIG. 7 shows a ROC curve illustrating the specificity and sensitivity of another embodiment of the present invention.

FIG. 8 schematically illustrates an Artificial Neural Network (ANN) Algorithm according to an aspect of the invention.

DETAILED DESCRIPTION OF THE INVENTION

As used herein, "cycle threshold" (C_T) is the point at which target amplification using real-time PCR rises above background, as indicated by a signal such as a fluorescence signal. The C_T is inversely related to the quantity of the sequence being investigated.

As defined herein, "sensitivity" refers to the fraction of true positives (true positive rate) results obtained using the method of the present invention.

As defined herein, "specificity" refers to the fraction of false positives (false positive rate) results obtained using the method of the present invention.

In one embodiment of the present invention, methods are provided for monitoring and diagnosing cancer through the detection and quantification of the aforementioned 3.4 kb mtDNA deletion. For example, the present invention may be used for detecting the presence of pre-neoplasia, neoplasia and progression towards potential malignancy of prostate cancer and breast cancer. In one aspect, the present invention involves the detection and quantification of the 3.4 kb

5

mtDNA deletion (SEQ ID NO:1) for the detection, diagnosis, and/or monitoring of cancer. In this method, mtDNA is extracted from a biological sample (for example body tissue, or body fluids such as urine, prostate massage fluid). The extracted mtDNA is then tested in order to determine the levels (i.e. quantity) of the 3.4 kb deletion in the sample. In tests conducted by the present inventors, the levels of the deletion were found to be elevated in samples obtained from subjects with cancer when compared to samples obtained from subjects without cancer. Based on the information and data supplied below, the inventors have concluded that elevated levels of the 3.4 kb deletion in the mtDNA is indicative of cancer.

As disclosed in PCT WO/06/111029, the 3.4 kb deletion spans approximately nucleotides 10744 to 14124 of the mtDNA genome. The mtDNA genome is listed as SEQ ID NO:8 (Genbank accession no. AC_000021). The inventors have determined, as provided by example below, that this deletion is also associated with cancer and in particular prostate and breast cancer. Therefore, such deletion provides an accurate biomarker and, therefore, a valuable tool for the detection, diagnosis, or monitoring of cancer in at least these tissues.

The deletion results in the creation of two deletion monomers, one of 3.4 kb in size (small sublimon) and one of approximately 12.6 kb in size (large sublimon). The occurrence of the deletion may be detected by either identifying the presence of the small sublimon, or by determining that the 3.4 kb sequence has been deleted from the large sublimon.

As discussed above, the deletion is approximately 3379 bp, and comprises genes encoding NADH dehydrogenase subunit 4L, NADH dehydrogenase subunit 4, NADH dehydrogenase subunit 5, tRNA histidine, tRNAserine2, and tRNA leucine2.

In one embodiment, samples of, for example prostate tissue, prostate massage fluid, urine or breast tissue, are obtained from an individual and tested over a period of time (e.g. years) in order to monitor the genesis or progression of cancer. Increasing levels of the 3.4 kb deletion over time could be indicative of the beginning or progression of cancer.

Age related accumulation of the 3.4 kb mtDNA deletion may predispose an individual to, for example, prostate cancer or breast cancer, which is prevalent in middle aged and older men, and middle aged and older women, respectively. According to one aspect of the invention, a method is provided wherein regular cancer screening may take place by monitoring over time the amount of the 3.4 kb deletion in body tissues such as breast tissue or body fluids such as prostate massage fluid, or urine.

The system and method of the present invention may be used to detect cancer at an early stage, and before any histological abnormalities. For example, the system and method of the present invention may be used to detect pre-neoplasia in breast tissue.

The following primer sequences are preferred for the detection of the 3.4 kb deletion:

3.4 forward (binds to bases 10729-10743/14125-14139 of the mtDNA genome)

5'-TAGACTACGTACATACTAACCCCTACTCCTA-3'; (SEQ ID NO: 2)

3.4 reverse (binds to bases 14361-14379 of the mtDNA genome)

5'-GAGGTAGGATTGGTGCTGT-3'. (SEQ ID NO: 3)

In one embodiment of the present invention, a pair of amplification primers are used to amplify a target region

6

indicative of the presence of the 3.4 kb deletion. In this embodiment, one of the pair of amplification primers overlaps a spliced region of mtDNA after deletion of the 3.4 kb sequence has occurred (i.e. a splice at a position spanning approximately residues 10744 and 14124 of the mtDNA genome). Therefore, extension of the overlapping primer can only occur if the 3.4 kb section is deleted.

In another embodiment of the present invention, a pair of amplification primers are used to amplify a target region associated with the deleted 3.4 kb sequence. The deleted 3.4 kb sequence, upon deletion, may reform as a circular mtDNA molecule. In this embodiment, one of the pair of amplification primers overlaps the rejoining site of the ends of the 3.4 kb sequence. Thus, an increase in the amount of the 3.4 kb molecule detected in a sample is indicative of cancer. The below primer pair is preferred for the detection of the deleted 3.4 kb nucleic acid.

Forward 14115/10755 (SEQ ID NO: 9)

5'-CCCACTCATCACCTAAACCTAC-3'

Reverse 10980R

5'-GGTAGGAGTCAGGTAGTTAG-3'. (SEQ ID NO: 10)

In one aspect of the invention, a kit for diagnosing cancer, for example prostate or breast cancer, comprising means for extraction of mtDNA, primers having the nucleic acid sequences recited in SEQ ID NOS: 2 and 3, or SEQ ID NOS: 9 and 10, reagents and instructions, is provided.

Another aspect of the invention provides methods for confirming or refuting the presence of a cancer biopsy test from a biopsy sample (e.g. prostate or breast cancer), comprising: obtaining non-cancerous tissue from a biopsy sample; and detecting and quantifying the amount of the 3.4 kb mtDNA deletion in the non-diseased tissue.

In one embodiment the present invention provides a method for screening individuals for prostate or breast cancer from a body fluid sample comprising; obtaining a body fluid sample, and detecting and quantifying the level of the 3.4 kb mtDNA deletion in the body fluid.

Although real-time quantitative PCR methods, as described in the examples below, represent the preferred means for detecting and quantifying the presence or absence of the 3.4 kb deletion, other methods that would be well known to an individual of skill in the art could also be utilized. For example quantification of the deletion could be made using Bio-Rad's Bioplex™ System and Suspension Array technology. Generally, the method requires amplification and quantification of sequences using any known methods.

The examples provided below illustrate that not only can this deletion be used for the detection of prostate cancer in prostate tissue, but can also be used to detect the presence of cancer in other biological samples, for example prostate massage fluid, urine, and breast tissue. Based on the findings in these examples, the 3.4 kb mtDNA deletion may be used as a biomarker for cancer.

The various examples provided illustrate a difference in the amount of mtDNA having the 3.4 kb deletion between samples obtained from subjects having cancer, and subjects without cancer. The amount of the 3.4 kb deletion was found to be higher in the samples obtained from subjects having cancer. This determination was made by comparing the

amount of the 3.4 kb deletion in the test samples with amounts from known cancer cells and/or known non-cancer cells.

EXAMPLE 1

3.4 kb Deletion in the mtDNA of Prostate Tissue

A deletion of approximately 3.4 kilobases (kb) was identified through full mitochondrial genome amplification of fresh frozen prostate tissue. Using linear regression, the size of the deletion was estimated to be between 3000 base pairs (bp) and 3500 bp. Two possible candidate deletions were identified using Mitomap™ (Brandon, M. C., Lott, M. T., Nguyen, K. C., Spolim, S., Navathe, S. B., Baldi, P. & Wallace, D. C., MITOMAP: a human mitochondrial genome database—2004 update. *Nucleic Acids Research* 33 (Database Issue):D611-613, 2005; www.mitomap.org.), the 3397 bp deletion at 9574-12972, and the 3379 bp deletion at 10744-14124. In order to determine which of the two deletions was associated with prostate cancer, if either, a forward primer which bridged the deletion junction was developed for each of the two candidates, ensuring that the primer extended further than the repeat regions that flank the deletions. FIG. 1 is a schematic diagram showing the design and sequence of the primer (i.e. SEQ ID NO: 2). Positive amplification results for the amplicon corresponding to the 3379 bp deletion (referred to as the 3.4 kb deletion) at 10744-14124 were obtained.

As indicated above, the 3.4 kb deletion removes all or part of the following genes: (i) NADH dehydrogenase subunit 4L, (ii) NADH dehydrogenase subunit 4, (iii) NADH dehydrogenase subunit 5, (iv) tRNA histidine, (v) tRNA serine2, and (vi) tRNA leucine2.

The 3.4 kb deletion was determined to be present in 91% of 33 fresh frozen prostate samples. With the specific deletion primers, formalin fixed tissues were tested in order to increase the n value.

The present investigators sequenced entire mitochondrial genomes from 32 tissue samples microdissected by laser capture microdissection and 12 needle biopsies from histologically normal prostates. Archived tissue sections from each of these samples were used for the following study. 1-2 serial sections were removed from each sample. DNA was extracted from each sample in its entirety rather than as a microdissection. Thus, each sample consisted of a mixture of glandular prostate tissue as well as stromal prostate tissue. This extraction was performed using Qiagen's QIAamp™ DNA Mini Kit (Cat #51304). Following extraction the samples were quantified using a Nano-Drop™ spectrophotometer and the concentrations were subsequently normalized to 2 ng/ul. Each sample was amplified using 20 ng input DNA and an iQ™ SYBR Green Supermix™ kit (Bio-Rad Laboratories Inc.) Reactions were run on an Opticon® 2 two colour real-time PCR system (MJ Research).

As shown in FIG. 2, a distinct difference was observed in cycle threshold and, by extension, quantity of the deletion between the malignant prostate samples and the symptomatic benign prostate samples. Malignant samples exhibited a consistently earlier cycle threshold than the benign samples.

EXAMPLE 2

3.4 kb Deletion Blinded Study—Comparison of Cycle Threshold

An additional 21 prostate tissue samples were selected, 10 of which were benign and 11 of which were malignant. The

pathological status was determined by needle biopsies conducted by a qualified pathologist. The samples were blinded such that the present investigators were unaware of their pathological status when they conducted this test. The present investigators were able to predict pathological status correctly in 81% of the cases by examining the cycle threshold. Of the 4 incorrect calls, two were malignant samples that were determined to be benign and 2 were benign samples that were determined to be malignant. Follow-up clinical information for the 2 individuals in the latter scenario was requested from the physician to determine if they had been diagnosed with prostate cancer subsequent to the needle biopsy results used for this study. One of the individuals who originally produced a benign sample but was predicted by this study to have a malignancy subsequently produced a malignant sample. As a result, one of the false positives became a true positive. Therefore, pathological status was predicted correctly in 86% of the cases examined in this study. The ultimate positive predictive value (PPV, where $PPV = \text{true positives} / (\text{true positives} + \text{false positives})$) for this study was 91% and the negative predictive value (NPV, where $NPV = \text{true negatives} / (\text{true negatives} + \text{false negatives})$) was 80%.

EXAMPLE 3

3.4 kb Deletion Study—Methods (n=76)

Seventy-six prostate tissue samples were examined for the 3.4 kb deletion in this study. All tissue samples were formalin-fixed, 25 being malignant, 12 being normal, and 39 having benign prostatic disease as shown histologically. Of the latter group more than half had hyperplasia. All specimens were needle biopsies taken from the investigators' tissue archives.

Prostate Specimens

A tapelift was performed on each slide using Prep-Strips (Catalogue Number LCM0207) from Arcturus Bioscience Inc. This allowed the removal of any particulate matter or non-adhering tissue from the slide prior to DNA extraction. With the tissue still on the slides, the slides were rinsed with PBS (Phosphate Buffered Saline Solution) to remove as much fixative as possible. The 1-2 needle biopsy sections on the slides were scraped into sterile microcentrifuge tubes using individually wrapped, sterilized surgical razor blades. DNA was then isolated and purified using a QIAamp® DNA Mini Kit (Qiagen, Cat. #51304) according to manufacturer's specifications. A negative extract control was processed in parallel with the slide extractions as a quality control check-point. The total concentration of DNA and purity ratio for each sample was determined by spectrophotometry (Nano-Drop™ ND-1000) and dilutions of 2 ng/ul were prepared for the purpose of Quantitative Polymerase Chain Reaction (qPCR).

Primers (Oligonucleotides)

Purified oligonucleotide primers were chemically synthesized by Invitrogen (California, USA). The sequences of the primers and the expected sizes of the PCR products amplified are listed in Table 1. In addition, PCR analysis for mtDNA deletions included positive controls (DNA from a source known to carry the mutant mtDNA). Each primer set with the exception of TNF (tumor necrosis factor) were checked against a mitochondria-free rho 0 cell line to confirm the absence of pseudogene coamplification.

TABLE 1

Amplification Primers.		
Primer Pair	Position Amplified 5'-3'	Length of amplified product (base pairs)
3.4 Deletion Real-Time	10729-14379 (less 3379 bp at 10744-14124)	273
12s mtDNA	708-945	238
TNF	3756-3886	131
3.4 forward (10729-10743-14125-14139) 5' TAGACTACGTACATACTAACCCTACTCCTA-3' SEQ ID NO: 2		
3.4 reverse (14361-14379) 5'-GAGGTAGGATTGGTGCTGT-3' SEQ ID NO: 3		
12s forward (708-728) 5'-CGTTCCAGTGAGTTCACCCCTC-3' SEQ ID NO: 4		
12s reverse (923-945) 5'-CACTCTTTACGCCGGCTTCTATT-3' SEQ ID NO: 5		
TNF forward (3756-3775) 5'-CCTGCCCAATCCCTTTATT-3' SEQ ID NO: 6		
TNF reverse (3866-3886) 5'-GGTTTCGAAGTGGTGGTCTTG-3' SEQ ID NO: 7		

Real-Time Polymerase Chain Reaction

Three separate PCRs were performed on each sample. Each reaction was 25 μ l total volume and included template DNA, one pair of primers (12s or 3.4 Deletion or TNF), an iQ™ SYBR Green Supermix™ kit (Catalogue Number 170-8882, Bio-Rad Laboratories Inc.) and distilled deionized water (ddH₂O). The TNF (tumor necrosis factor) comprised single copy nuclear gene primers, and 12s comprised total mitochondrial genome primers. The volume and concentrations for template DNA, primers, and reaction buffer are listed below.

TABLE 2

qPCR Components.		
Reagent	Concentration per Reaction	Volume per Reaction
Reaction Buffer	1X	12.5 μ l
Primer (forward and reverse)	250 nM	0.0625 μ l of each 100 μ mol stock
ddH ₂ O	N/A	2.375 μ l
Template DNA	20 ng	10.0 μ l
Total		25 μ l

The cycling parameters for each amplicon are listed in Table 3.

TABLE 3

Cycling Parameters.		
Step	Temperature (° C.)	Duration
1	95	3 min
2	95	30 sec
3	66 (3.4 deletion primers) or 61.5 (12 s primers) or 61.5 (TNF primers)	30 sec
4	72	30 sec
5	Plate Read	
6	72	10 min
7	Melting Curve 50° C.-110° C. reading every 1° C.	3 sec

Repeat steps 2-5, 44 times for a total of 45 cycles.

Thermal cycling, real-time detection and analysis of the reactions was carried out using a DNA Engine Opticon® 2

Continuous Fluorescence Detection System equipped with Intuitive Opticon Monitor™ software (MJ Research Inc.). The standard curve method was utilized for DNA quantification. A set of serial dilutions (10⁶, 10⁵, 10⁴, 10³, 10², 10¹) of three purified PCR generated templates, one product for the 3.4 deletion, one for the 12s primers, and one for TNF. From this, three different standard curves were generated showing the number of copies of total mtDNA (12s amplicon-total mitochondrial genome primers), the amount of mtDNA having the 3.4 kb deletion, or total nuclear DNA (TNF-single copy nuclear gene primers). The C_T values of the samples were then converted to the number of DNA copies by comparing the sample C_T to that of the standards. The 3.4 deletion was considered to be absent or at low levels if the deletion was not detected within 37 cycles.

The determination of malignancy is based upon the quantity of the 3.4 kb deletion present in the normalized sample as indicated by the location of the cycle threshold. This location may be either absolute, as in greater than 25 cycles but less than 35 cycles, or more likely a ratio between the total mitochondrial DNA present as indicated by the 12s amplicon, and the 3.4 kb deletion. This may be expressed as a percent of the total mitochondrial DNA. The number of cells, as represented by the TNF amplicon, may be incorporated to refine the distinction between benign and malignant tissues.

In order to automate the analyses of these samples, bioinformatics tools were employed. The three variables that were considered for these analyses were the cycle threshold C_T of Tumour Necrosis Factor (TNF), total pieces of mitochondria that contain those specific primer sites, and those mitochondria that harbour the deletion of interest.

Cluster Analysis

The clustering was not normalized nor were logarithmic functions used due to the similar and small range of data.

FIG. 3 shows the actual movement and trends of the data. The x-axis is the patient number and the y-axis is the cycle threshold obtained from real time PCR.

It is important to note that the higher the cycle threshold is, the lower amount of the deletion is present.

The general trend shown in FIG. 3 is based upon the differences/ratios between the variables of Deletion, Total, and TNF. The deletion is low to absent for the benign/normal

samples (right side) and increases (toward the left) with abnormal benign and malignant samples. The abnormal benign and malignant samples begin to differentiate themselves from each other based on the cycle threshold ratio of Deletion to TNF.

Supervised Learning

Supervised learning is based on the system trying to predict outcomes for known samples. Half of the data was used to train and the other half to test the algorithm. Supervised learning compares its predictions to the target answer and “learns” from its mistakes. But, if the predicted output is higher or lower than the actual outcome in the data, the error is propagated back through the system and the weights are adjusted accordingly.

Data SET:

5% to 35%—Benign

35% to 65%—Hyperplasia

65% to 95%—Malignant

An Artificial Neural Network (ANN) Algorithm is shown in FIG. 8, wherein:

Half of Data set used for Training ANN

Other half used to compare the accuracy
Accuracy=Compare expected data set with obtained data set→86.6%.

Supervised Learning of Deletion Data using Artificial Neural Network (ANN)

Three Classifications:

Benign

Hyperplasia

Malignant

Three variables for each classification were used based on Real Time PCR Cycle Threshold C_T :

Tumour Necrosis Factor (TNF)—Nuclear copy control.

Total Mitochondria—Mitochondria copy control

Deletion—Mitochondria in the deleted state.

Results:

Half of data set is used to train the ANN, and the remaining half is used to compare the accuracy.

Three Classification Accuracy=86.6%

Positive Predictive Value (PPV);

Benign to Malignant=88.2%

Negative Predictive Value (NPV)

Benign to Malignant=76.5%

EXAMPLE 4

3.4 kb Deletion in mtDNA Associated with Breast Cancer

18 samples were tested from malignant and benign breast tissue, 9 being malignant and 9 being benign, for the presence of the aforementioned 3.4 kb deletion. Samples were classified as either malignant or benign using conventional histopathological analysis.

DNA was isolated and purified from the samples using a QIAamp® DNA Mini Kit (Qiagen, Cat. #51304) according to manufacturer's specifications.

Purified oligonucleotide primers were chemically synthesized by Invitrogen (California, USA). The sequences of the primers and the expected sizes of the PCR products amplified are listed in Table 1 above.

Real-Time Polymerase Chain Reaction

Three separate PCRs were performed on each sample. Each reaction was 25 μ l total volume and included template DNA, one pair of primers (12s or 3.4 Deletion or TNF), an iQ™ SYBR Green Supermix kit (Catalogue Number 170-8882, Bio-Rad Laboratories Inc.) and distilled deionized

water (ddH₂O). The TNF (tumor necrosis factor) comprised single copy nuclear gene primers, and 12s comprised total mitochondrial genome primers. The volume and concentrations for template DNA, primers, and reaction buffer are listed below:

TABLE 4

qPCR Components.		
Reagent	Concentration per Reaction	Volume per Reaction
Reaction Buffer	1X	12.5 μ l
Primer (forward and reverse)	250 nM	0.0625 μ l of each 100 μ mole stock
ddH ₂ O	N/A	2.375 μ l
Template DNA	20 ng	10.0 μ l
Total		25 μ l

The cycling parameters for each amplicon are listed in Table 5.

TABLE 5

Cycling Parameters.		
Step	Temperature (° C.)	Duration
1	95	3 min
2	95	30 sec
3	66 (3.4 deletion primers) or 61.5 (12 s primers) or 61.5 (TNF primers)	30 sec
4	72	30 sec
5	Plate Read	
6	72	10 min
7	Melting Curve 50° C.-110° C. reading every 1° C.	3 sec

Repeat steps 2-5, 44 times for a total of 45 cycles.

Thermal cycling, real-time detection and analysis of the reactions was carried out using a DNA Engine Opticon® 2 Continuous Fluorescence Detection System equipped with Intuitive Opticon Monitor™ software (MJ Research Inc.). The standard curve method was utilized for DNA quantification. A set of serial dilutions (10⁶, 10⁵, 10⁴, 10³, 10², 10¹) of three purified PCR generated templates were performed, one product for the 3.4 deletion, one for the 12s primers, and one for TNF. From this, three different standard curves were generated showing the number of copies of total mtDNA (12s amplicon-total mitochondrial genome primers), 3.4 deletion or total nuclear DNA (TNF-single copy nuclear gene primers). The C_T values of the samples were then converted to the number of DNA copies by comparing the sample C_T to that of the standards.

The determination of malignancy was based upon the quantity of the 3.4 kb deletion present in the normalized sample as indicated by the location of the cycle threshold. This location may be either absolute, as in greater than 25 cycles but less than 30 cycles, or more likely a ratio between the total mitochondrial DNA present as indicated by the 12s amplicon, and the 3.4 kb deletion. This may be expressed as a percent of the total mitochondrial DNA.

In order to automate the analyses of these samples, bioinformatics tools were employed. The three variables that were considered for these analyses were the cycle threshold C_T of Tumour Necrosis Factor (TNF), total species of mitochondria that contain those specific primer sites, and those mitochondria that harbour the deletion of interest.

13

Table 6 and FIG. 7 show the difference in the mean C_T scores for samples from malignant tissue and benign tissue. The mean C_T value for normal tissue was 30.5889, while the mean C_T for malignant tissue was 27.8533 thereby illustrating a difference in the quantity of mtDNA having the 3.4 kb deletion in malignant breast tissue compared to normal breast tissue.

TABLE 6

Mean values for C_T scores Group Statistics				
GRP	N	Mean	Std. Deviation	Std. Error Mean
del3.4 normal	9	30.5889	2.53897	.84632
malignant	9	27.8533	2.52253	.84084

FIG. 8 is an ROC curve illustrating the specificity and sensitivity of the 3.4 kb mtDNA deletion as a marker for breast cancer when testing breast tissue. These results were obtained using a cutoff C_T of 29.1900. The sensitivity of the marker at this C_T was 77.8%, while the specificity was 77.8%.

Table 7 shows the calculation of the area under the curve for the present example. As a measure of the accuracy of the test.

TABLE 7

Results Showing Area Under the Curve Area Under the Curve Test Result Variable(s): del3.4				
Area	Std. Error ^a	Sig. ^b	Asymptotic 95% Confidence Interval	
			Lower Bound	Upper Bound
.790	.112	.038	.570	1.010

^aUnder the nonparametric assumption
^bNull hypothesis: true area = 0.5

The determination of the cutoff C_T of 29.1900 is shown in table 8 below. The results listed in table 8 show that a cutoff C_T of 29.1900 provided the highest sensitivity and specificity at 78% and 78% respectively.

TABLE 8

Determination of C_T cutoff. Coordinates of the Curve Test Result Variable(s): del3.4		
Positive if Less Than or Equal To ^a	Sensitivity	1 - Specificity
24.6000	.000	.000
25.6800	.111	.000
25.7700	.222	.000
25.9250	.333	.000
26.2050	.444	.000
26.8400	.556	.000
27.4800	.556	.111
28.1600	.556	.222
28.8800	.667	.222
29.1900	.778	.222
29.4600	.778	.333
29.8750	.778	.444
30.5850	.778	.556
31.2200	.778	.667
31.5000	.889	.667

14

TABLE 8-continued

Determination of C_T cutoff. Coordinates of the Curve Test Result Variable(s): del3.4		
Positive if Less Than or Equal To ^a	Sensitivity	1 - Specificity
31.7650	.889	.778
32.9900	1.000	.778
34.3350	1.000	.889
35.6400	1.000	1.000

^aThe smallest cutoff value is the minimum observed test value minus 1, and the largest cutoff value is the maximum observed test value plus 1. All the other cutoff values are the averages of two consecutive ordered observed test values.

EXAMPLE 5

The 3.4 kb Deletion in the Prostate Massage Fluid of Individuals with Prostate Cancer as Compared to the Fluid from Those Without Histological Evidence of Prostate Cancer

Forty prostate massage fluid samples were collected by urologists from patients who were either subsequently diagnosed with prostate cancer or showed no histological evidence of prostate cancer following a prostate needle biopsy procedure. The sample was deposited on a IsoCode Card™ (Schleicher & Shuell), dried, and then extracted according to the manufacturer's protocol. All DNA extracts were quantified using a NanoDrop™ ND-1000 Spectrophotometer and the DNA concentration normalized to 2 ng/ul. Each sample was then amplified according to the following parameters:

- 1X iQ SYBR Green Supermix™ (Bio-Rad P/N 170-8880)
- 150 nmol forward primer (SEQ ID NO: 2)
(5'-TAGACTACGTACATACTAACCCTACTCCTA-3')
- 150 nmol reverse primer (SEQ ID NO: 3)
(5'-GAGGTAGGATTGGTGCTGT-3')
- 20 ng template DNA in a 25 ul reaction.

Reactions were cycled on an Opticon™ 2 DNA Engine (Bio-Rad Canada) according to the following protocol:

1. 95° C. for 3 minutes
2. 95° C. for 30 seconds
3. 66° C. for 30 seconds
4. 72° C. for 30 seconds
5. Plate Read
6. Repeat steps 2-5 44 times
7. 72° C. for 10 minutes
8. Melting Curve from 50° C. to 105° C., read every 1° C., hold for 3 seconds
9. 10° C. Hold

TABLE 9

Results showing the mean C_T Values for Prostate Massage Fluid Test Group Statistics				
Group	N	Mean	Std. Deviation	Std. Error Mean
DEL3.4 benign	25	37.1869	3.18495	.63699
malignant	15	33.7712	3.98056	1.02778

Tables 9 and 10 show a significant difference between the mean C_T values obtained for the benign sample and the malignant sample groups (p=0.005).

TABLE 10

Results Showing Difference (p = 0.005) for C_T values of samples. Independent Samples Test										
t-test for Equality of Means										
		Levene's Test for Equality of Variances						95% Confidence Interval of the Difference		
		F	Sig.	t	of	Sig. (2-tailed)	Mean Difference	std. Error Difference	Lower	Upper
DEL34	Equal Variances assumed	1.251	.270	2989	38	.005	341570	1.14283	1.10217	5.72923
	Equal Variances not assumed			2825	24.696	.009	341570	1.20917	.92382	5.90758

FIG. 5 is a Receiver Operating Characteristic (ROC) curve illustrating the specificity and sensitivity of the 3.4 kb mtDNA deletion as a marker for prostate cancer when testing prostate massage fluid. These results were obtained using a cutoff C_T of 37.3683. The sensitivity of the marker at this C_T is 87%, while the specificity is 64%.

The accuracy of the test depends on how well the test separates the group being tested into those with and without the prostate cancer. Accuracy is measured by the area under the ROC curve. Table 11 shows the calculation of the area under the curve for the present example.

TABLE 11

Results Showing Area Under the ROC Curve Area Under the Curve Test Result Variable(s): DEL3.4				
Area	Std. Error ^a	Sig. ^b	Asymptotic 95% Confidence Interval	
			Lower Bound	Upper Bound
.768	.074	.005	.622	.914

^aUnder the nonparametric assumption
^bNull hypothesis: true area = 0.5

TABLE 12

Determination of Specificity and Sensitivity Coordinates of the Curve Test Result Variable(s): DEL3.4		
Positive if Less Than or Equal To ^a	Sensitivity	1 - Specificity
26.2992	.000	.000
27.3786	.067	.000
28.2484	.133	.000
29.5193	.200	.000
30.1757	.200	.040
30.4580	.200	.080
30.5980	.267	.080
31.5709	.333	.080
32.5712	.333	.120
32.9500	.333	.160
33.3314	.400	.160
33.6547	.467	.160
33.9247	.533	.160
34.3554	.533	.200
34.9056	.533	.240
35.4650	.533	.280
35.9172	.533	.320
36.0648	.600	.320
36.3616	.667	.320
36.6421	.733	.320

TABLE 12-continued

Determination of Specificity and Sensitivity Coordinates of the Curve Test Result Variable(s): DEL3.4		
Positive if Less Than or Equal To ^a	Sensitivity	1 - Specificity
36.8531	.733	.360
37.1188	.800	.360
37.3883	.867	.360
37.5200	.867	.400
37.8341	.867	.440
38.2533	.867	.480
38.5198	.933	.480
38.6519	.933	.520
38.8552	.933	.560
39.1258	.933	.600
39.2734	.933	.640
39.4952	.933	.680
39.7323	1.000	.680
39.8956	1.000	.720
41.0000	1.000	1.000

The smallest cutoff value is the minimum observed test value -1, and the largest cutoff value is the maximum observed test value plus 1. All the other cutoff values are the average of two consecutive ordered, observed test values.

The determination of the cutoff C_T of 37.3683 is shown in table 12 above. The results listed in table 12 illustrate that a cutoff C_T of 37.3683 provided the highest sensitivity and specificity.

EXAMPLE 6

The 3.4 kb Deletion in the Urine of Individuals with Prostate Cancer as Compared to the Fluid From Those Without Histological Evidence of Prostate Cancer

Urine samples were collected from 5 patients who were diagnosed with prostate cancer and 5 who have had a needle biopsy procedure which was unable to detect prostate malignancy. These samples were collected following a digital rectal exam (DRE) to facilitate the collection of prostate cells.

Upon receipt of the samples a 5 ml aliquot was removed and then 2 mls were centrifuged at 14,000xg to form a pellet. The supernatant was removed and discarded. Pellets were resuspended in 200 µl phosphate buffered saline solution. Both the resuspended pellet and the whole urine sample were subjected to a DNA extraction procedure using the QiaAMP™ DNA Mini Kit (Qiagen P/N 51304) according to

17

the manufacturer's directions. The resulting DNA extracts were then quantified using a NanoDrop™ ND-1000 Spectrophotometer and normalized to a concentration of 0.1 ng/ul.

Samples were analyzed by quantitative real-time PCR with the 3.4 kb deletion specific primers according to the following:

1X iQ SYBR Green Supermix™ (Bio-Rad P/N 170-8880)
 100 nmol forward primer (SEQ ID NO: 2)
 (5'-TAGACTACGTACATACTAACCTACTCCTA-3')
 100 nmol reverse primer (SEQ ID NO: 3)
 (5'-GAGGTAGGATTGGTGCTGT-3')
 1 ng template DNA in a 25 ul reaction.

Reactions were cycled on an Opticon™2 DNA Engine (Bio-Rad Canada) according to the following protocol:

1. 95° C. for 3 minutes
2. 95° C. for 30 seconds
3. 69° C. for 30 seconds
4. 72° C. for 30 seconds
5. Plate Read
6. Repeat steps 2-5 44 times
7. 72° C. for 10 minutes
8. Melting Curve from 50° C. to 105° C., read every 1° C., hold for 3 seconds
9. 10° C. Hold

Group Statistics				
GRPfluid38	N	Mean	Std. Deviation	Std. Error Mean
CTf Benign	5	33.2780	1.10900	.49596
Malignant	5	30.6980	2.55767	1.14382

Tables 13 and 14 show a significant difference between the mean C_T values obtained for benign sample and the malignant sample groups ($p=0.005$).

TABLE 14

Results Showing Difference ($p = 0.005$) for C_T values of samples. Independent Samples Test										
t-test for Equality of Means										
		Levene's Test for Equality of Variances						95% Confidence Interval of the Difference		
		F	Sig.	t	of	Sig. (2-tailed)	Mean Difference	std. Error Difference	Lower	Upper
CTf	Equal Variances assumed	1272	.292	2069	8	.072	258000	1.24672	-.29494	545494
	Equal Variances not assumed			2069	5453	.089	258000	1.24672	-.54639	570639

FIG. 6 is a Receiver Operating Characteristic (ROC) curve illustrating the specificity and sensitivity of the 3.4 kb mtDNA deletion as a marker for prostate cancer when testing urine. These results were obtained using a cutoff C_T of 31.575. The sensitivity of the marker at this C_T is 80%, while the specificity is 100%.

The determination of the cutoff C_T of 31.575 is shown in table 15. The results listed in table 15 show that a cutoff C_T of 31.575 provided the highest sensitivity and specificity.

18

TABLE 15

Determination of C_T cutoff. Coordinates of the Curve Test Result Variable(s): CTF			
	Positive if Less Than or Equal To ^a	Sensitivity	1 - Specificity
	26.2900	.000	.000
	28.4950	.200	.000
	30.3850	.400	.000
	31.0800	.600	.000
	31.5750	.800	.000
	32.1400	.800	.200
	32.8150	.800	.400
	33.8700	.800	.600
	34.3350	.800	.800
	34.3550	1.000	.800
	35.3700	1.000	1.000

^aThe smallest cutoff value is the minimum observed test value minus 1, and the largest cutoff value is the maximum observed test value plus 1. All the other cutoff values are the averages of two consecutive ordered observed test values.

EXAMPLE 7

Detection of Re-Circularized 3.4 kb Deleted Sequence in Prostate Malignant and Benign Tissue

In this example, the amount of re-circularized 3.4 kb deleted mtDNA molecules in samples was tested as an indicator for prostate cancer. As mentioned above, the 3.4 kb sequence, upon deletion, may reform as a circular mtDNA molecule. Amplification of a target region from the deleted 3.4 kb mtDNA sublimon was conducted using a primer pair (SEQ ID NOS: 9 and 10). The forward primer (SEQ ID NO: 9), overlaps the rejoining site of the ends of the 3.4 kb sequence.

Prostate tissue was formalin-fixed paraffin embedded prostate tissue needle biopsies.

The reagent setup used for this example was as follows:
 250 nmol each primer
 12.5 ul of 2x reaction mix,
 20 ng (10 ul of 2 ng/ul) template in 25 ul reaction volume.

The cycling parameters were as follows:

1. 95 degrees Celsius for 3 minutes
2. 95 degrees Celsius for 30 seconds
3. 62 degrees Celsius for 30 seconds
4. 72 degrees Celsius for 30 seconds
5. Plate Read
6. Repeat steps 2-5 44 times
7. 72 degrees for 10 minutes

8. Melting Curve from 50-100 degrees, reading every 1 degree for 3 seconds
9 4 degrees HOLD.

Amplification of a target region from the deleted 3.4 kb mtDNA sublimon was conducted using a primer pair (SEQ ID NOS: 9 and 10).

Table 16 below provides a summary of testing conducted for the detection of the actual 3.4 kb deleted in mtDNA obtained from malignant and benign prostate tissue. Using a C_T score of 30.0, a clear identification of malignant and benign tissue was possible. As such, an increase in the amount of the 3.4 kb molecule present in a sample was indicative of cancer.

TABLE 16

C _T scores for Detection of Cancer in Prostate Tissue	
Description	C _T
Benign sample 1	33.75
Malignant sample 1	28.79
Benign sample 2	30.96
Malignant sample 2	28.4
Benign sample 3	32.19
Malignant sample 3	27.38

Although the invention has been described with reference to certain specific embodiments, various modifications thereof will be apparent to those skilled in the art without departing from the spirit and scope of the invention as outlined in the claims appended hereto.

REFERENCES

Birch-Machin M A, Online Conference Report (Sunburnt DNA), International Congress of Biochemistry and Molecular Biology, New Scientist, 2000(a)
 Birch-Machin M A, Taylor R W, Cochran B, Ackrell B A C, Turnbull D M. *Ann Neurol* 48: 330-335, 2000(b)
 Birch-Machin, M. A. (2000). Mitochondria and skin disease. *Clin Exp Dermatol*, 25, 141-6.
 Brown, M. D., et al., *Am J Humn Genet*, 60: 381-387, 1997
 Bogliolo, M, et al., *Mutagenesis*, 14: 77-82, 1999
 Chinnery P F and Turnbull D M., *Lancet* 354 (supplement 1): 17-21, 1999
 Huoponen, Kirsi, *Leber hereditary optic neuropathy: clinical and molecular genetic findings*, Neurogenetics (2001) 3: 119-125.
 Hayward S W, Grossfeld G D, Tlsty T D, Cunha G R., *Int J Oncol* 13:35-47, 1998
 Huang G M, Ng W L, Farkas J, He L, Liang H A, Gordon D, Hood R., *Genomics* 59(2):178-86, 1999

Konishi N, Cho M, Yamamoto K, Hiasa Y. *Pathol. Int.* 47:735-747, 1997
 Landis S H, Murray T, Bolden S, Wingo P A. *Cancer J Clin.* 49:8-31
 Lee H C, Lu C Y, Fahh H J, Wei Y Hu. *Federation of European Biochemical Societies*, 441:292-296, 1998
 Mitochondrial Research Society <http://www.mitoresearch.org/diseases.html>.
 MITOMAP: A human mt genome database (www.genememory.edu/mitomap.html)
 Naviaux, R K., *Mitochondrial Disease—Primary Care Physician's Guide*. Psy-Ed. Corp D/B/A *Exceptional Parents Guide*: 3-10, 1997
 Parrella P, Xiao Y, Fliss M, Sanchez-Cespedes M, Mazzarelli P, Rinaldi M, Nicol T, Gabrielson E, Cuomo C, Cohen D, Pandit S, Spencer M, Rabitti C, Fazio V M, Sidransky D: Detection of mitochondrial DNA mutations in primary breast cancer and fine-needle aspirates. *Cancer Res* 2001, 61:7623-7626
 Polyak Y, et al., *Nature Genet.* 20 (3):291-293, 1998
 Seidman, M. D. et al., *Arch. Otolaryngol Head Neck Surg.*, 123: 1039-1045, 1997
 Sherratt E J, Thomas A W, Alcolado J C., *Clin. Sci.* 92:225-235, 1997
 Shoffner J M, Brown M D, Torroni A, Lott M T, Cabell M F, Mirra S S, Beal M F, Yang C, Gearing M, Salvo R, Watts R L, Juncos J L, Hansen L A, Crain B J, Fayad M, Reckford C L, and Wallace D C., *Genomics* 17: 171-184, 1993
 SpringNet—CE Connection: Screening, Diagnosis: Improving Primary Care Outcomes. Website: <http://www.springnet.com/ce/j803a.htm>
 Taniike, M. et al., *BioChem BioPhys Res Comun*, 186: 47-53, 1992
 Valnot, Isabelle, et al., A mitochondrial cytochrome b mutation but no mutations of nuclearly encoded subunits in ubiquinol cytochrome c reductase (complex III) deficiency, *Human Genetics* (1999) 104: 460-466
 von Wurmb, N, Oehmichen, M, Meissner, C., *Mutat Res.* 422:247-254, 1998
 Wallace et al., Mitochondrial DNA MUTatio Associated with Leber's Hereditary Optic Neuropathy, *Science*, 1427-1429
 Wei Y H. Proceedings of the Nat. Sci. Council of the Republic of China April 22(2):5567, 1998
 Woodwell D A. National Ambulatory Medical Care Survey: 1997 Summary. Advance data from vital and health statistics; no. 305. Hyattsville, Md.: National Center for Health Statistics. 1999
 Yeh, J. J., et al., *Oncogene Journal*, 19: 2060-2066, 2000
 Zhang et al., Multiple mitochondrial DNA deletions in an elderly human individual, *FEBS Lett*, 297, 34-38 1992
 Zhang, C., et al., *BioChem. BioPhys. Res. Comun.*, 195: 1104-1110, 1993

SEQUENCE LISTING

```

<160> NUMBER OF SEQ ID NOS: 10

<210> SEQ ID NO 1
<211> LENGTH: 3379
<212> TYPE: DNA
<213> ORGANISM: Homo sapiens

<400> SEQUENCE: 1

cctaaaccta ctccaatgct aaaactaatc gtccaacaa ttatattact accactgaca      60

tgactttcca aaaaacacat aattgaaac aacacaacca cccacagcct aattattagc      120

atcatccttc tactatTTTT taaccaaadc aacaacaacc tatttagctg ttccccaacc      180
    
```

-continued

ttttcctcog	acccccctaac	aacccccctc	ctaatactaa	ctacctgact	cctaccctc	240
acaatcatgg	caagccaacg	ccacttatcc	agtgaaccac	tatcacgaaa	aaaactctac	300
ctctctatac	taatctcctc	acaaatctcc	ttaattataa	cattcacagc	cacagaacta	360
atcatatfff	atatcttctt	cgaaacacac	cttatcccca	ccttggetat	catcacccga	420
tgaggcaacc	agccagaacg	cctgaacgca	ggcacatact	tcctattcta	caccctagta	480
ggctcccttc	ccctactcat	cgcactaatt	tacactcaca	acaccctagc	ctcactaaac	540
attctactac	tcactctcac	tgcccaagaa	ctatcaaact	cctgagccaa	caacttaata	600
tgactagctt	acacaatagc	ttttatagta	aagatcacct	tttacggact	ccacttatga	660
ctccctaaag	cccagtgoga	agccccctac	gctgggtcaa	tagtacttgc	cgcagtactc	720
ttaaaactag	gcggtatgg	tataatacgc	ctcacactca	ttctcaacct	cctgacaaaa	780
cacatagcct	accccttctc	tgtactatcc	ctatgaggca	taattataac	aagctccatc	840
tgccctacgac	aaacagacct	aaaatcgctc	attgcatact	cttcaatcag	ccacatagcc	900
ctcgtagtaa	cagccattct	catccaaacc	cctgaagct	tcaccggcgc	agtcattctc	960
ataatcgccc	acgggcttac	atcctcatta	ctattctgcc	tagcaaacct	aaactacgaa	1020
cgcactcaca	gtcgcacat	aatcctctct	caaggacttc	aaactctact	cccactaata	1080
gctttttgat	gacttctagc	aagcctcctc	aacctcgcct	tacccccac	tattaacta	1140
ctgggagaac	tctctgtgct	agtaaccacg	ttctctgat	caaatatcac	tctcctactt	1200
acaggactca	acatactagt	cacagcccta	tactcctct	acataattac	cacaacacaa	1260
tggggctcac	tcaccacca	cattaacaac	ataaaacct	cattcacacg	agaaaacacc	1320
ctcatgttca	tacacctatc	ccccattctc	ctcctatccc	tcaaccccga	catcattacc	1380
gggttttctc	cttgtaata	tagtttaacc	aaaacatcag	attgtgaatc	tgacaacaga	1440
ggcttacgac	cccttattta	ccgagaaagc	tcacaagaac	tgctaactca	tgccccatg	1500
tctaacaaca	tggtttctc	aacttttaaa	ggataacagc	tatccattgg	tcttaggccc	1560
caaaaatttt	gggtgcaactc	caataaaaag	taataacct	gcacactact	ataaccacce	1620
taaccctgac	ttccctaatt	cccccatcc	ttaccacct	cgtaacctc	aacaaaaaaa	1680
actcataccc	ccattatgta	aaatccattg	tcgcatccac	ctttattatc	agtctcttcc	1740
ccacaacaat	attcatgtgc	ctagaccaag	aagttattat	ctcgaactga	cactgagcca	1800
caacccaac	aaccagctc	tccttaagct	tcaaacatga	ctacttctcc	ataatattca	1860
tcctctgtagc	attgttctgt	acatggcca	tcatagaatt	ctcactgtga	tatataaact	1920
cagacccaaa	cattaatcag	ttcttcaaat	atctactcat	cttctcaatt	accatactaa	1980
tcttagttac	cgctaacaac	ctattccaac	tgttcatcgg	ctgagagggc	gtaggaatta	2040
tatccttctt	gctcatcagt	tgatgatacg	cccagcaga	tgccaacaca	gcagccattc	2100
aagcaatcct	atacaaccgt	atcgccgata	tcggtttcat	cctcgcctta	gcatgattta	2160
tcctacactc	caactcatga	gaccacaac	aaatagcct	tctaacgct	aatccaagcc	2220
tcaccccaact	actaggctc	ctcctagcag	cagcaggcaa	atcagcccaa	ttaggtctcc	2280
acccctgact	cccctcagcc	atagaaggcc	ccacccagct	ctcagcccta	ctccactcaa	2340
gcactatagt	tgtagcagga	atcttcttac	tcctccgctt	ccacccctca	gcagaaaata	2400
gcccactaat	ccaaactota	acactatgct	taggcgctat	caccactctg	ttegcagcag	2460
tctgcgcct	tacacaaaat	gacatcaaaa	aaatcgtagc	cttctccact	tcaagtcaac	2520
taggactcat	aatagttaca	atcgccatca	accaaccaca	cctagcattc	ctgcacatct	2580

-continued

```

gtacccacgc cttcttcaaa gccatactat ttatgtgctc cgggtccatc atccacaacc 2640
ttaacaatga acaagatatt cgaaaaatag gaggactact caaaaccata cctctcactt 2700
caacctccct caccattggc agcctagcat tagcaggaat acctttcctc acaggtttct 2760
actccaaaga ccacatcatc gaaaccgcaa acatatcata cacaacgccc tgagccctat 2820
ctattactct catcgctacc tcctgacaa gcgcctatag cactcgaata attcttctca 2880
ccctaacagg tcaacctgcg tccccaccc ttactaacat taacgaaaat aaccccaccc 2940
tactaaaccc cattaaacgc ctggcagccg gaagcctatt cgcaggattt ctcattacta 3000
acaacatttc ccccgcatcc cccttccaaa caacaatccc cctctaccta aaactcacag 3060
ccctcgctgt cactttccta ggacttctaa cagccctaga cctcaactac ctaaccaaca 3120
aacttaaaat aaaatcccca ctatgcacat tttatttctc caacatactc ggattctacc 3180
ctagcatcac acaccgcaca atcccctatc taggccttct taagagccaa aacctgcccc 3240
tactctctct agacctaac tgactagaaa agctattacc taaaacaatt tcacagcacc 3300
aaatctccac ctccatcatc acctcaacc aaaaaggcat aattaaactt tacttctctt 3360
ctttcttctt cccactcat 3379

```

```

<210> SEQ ID NO 2
<211> LENGTH: 30
<212> TYPE: DNA
<213> ORGANISM: Artificial Sequence
<220> FEATURE:
<223> OTHER INFORMATION: synthetic primer 3.4 kb deletion forward

```

```

<400> SEQUENCE: 2

```

```

tagactacgt acatactaac cctactccta 30

```

```

<210> SEQ ID NO 3
<211> LENGTH: 19
<212> TYPE: DNA
<213> ORGANISM: Artificial Sequence
<220> FEATURE:
<223> OTHER INFORMATION: synthetic primer 3.4 kb deletion reverse

```

```

<400> SEQUENCE: 3

```

```

gaggtaggat tgggtgctgt 19

```

```

<210> SEQ ID NO 4
<211> LENGTH: 21
<212> TYPE: DNA
<213> ORGANISM: Artificial Sequence
<220> FEATURE:
<223> OTHER INFORMATION: synthetic primer mtDNA genome forward

```

```

<400> SEQUENCE: 4

```

```

cgttccagtg agttcacct c 21

```

```

<210> SEQ ID NO 5
<211> LENGTH: 23
<212> TYPE: DNA
<213> ORGANISM: Artificial Sequence
<220> FEATURE:
<223> OTHER INFORMATION: synthetic primer mtDNA genome reverse

```

```

<400> SEQUENCE: 5

```

```

cactctttac gccggcttct att 23

```


-continued

<210> SEQ ID NO 6
 <211> LENGTH: 20
 <212> TYPE: DNA
 <213> ORGANISM: Artificial Sequence
 <220> FEATURE:
 <223> OTHER INFORMATION: synthetic primer TNF nuclear gene forward

 <400> SEQUENCE: 6

 cctgccccaa tccctttatt 20

<210> SEQ ID NO 7
 <211> LENGTH: 21
 <212> TYPE: DNA
 <213> ORGANISM: Artificial Sequence
 <220> FEATURE:
 <223> OTHER INFORMATION: synthetic primer TNF nuclear gene reverse

 <400> SEQUENCE: 7

 ggtttcgaag tgggtgtctt g 21

<210> SEQ ID NO 8
 <211> LENGTH: 16569
 <212> TYPE: DNA
 <213> ORGANISM: Homo sapiens
 <220> FEATURE:
 <221> NAME/KEY: misc_feature
 <222> LOCATION: (3107)..(3107)
 <223> OTHER INFORMATION: n is a, c, g or t

 <400> SEQUENCE: 8

 gatcacaggt ctatcacocct attaaccact cacgggagct ctccatgcat ttggtatfff 60
 cgtctggggg gatgcaocg gatagcattg cgagacgctg gagccggagc accctatgfc 120
 gcagtatctg tctttgatfc ctgcctcacc ctattattta tcgcacctac gttcaatatt 180
 acaggcgaac atacttacta aagtgtgtta attaattaat gcttgtagga cataataata 240
 acaattgaat gtctgcacag ccactttcca cacagacacc ataacaaaaa atttccacca 300
 aacccccct cccccgcttc tggccacagc acttaaacac atctctgcca aacccccaaa 360
 acaaagaacc ctaacaccag cctaaccaga tttcaaattt tatcttttgg cggtagtcac 420
 ttttaacagt cccccccaa ctaacacatt attttccct cccactccca tactactaat 480
 ctcatcaata caacccccgc ccatcctacc cagcacacac acaccgctgc taacccccata 540
 ccccgaacca accaaacccc aaagacaccc cccacagttt atgtagctta cctcctcaaa 600
 gcaatacact gaaaatgttt agacgggctc acatcaccoc ataacaaaat aggtttggtc 660
 ctagccttfc tattagctct tagtaagatt acacatgcaa gcatccccgt tccagtgagt 720
 tcaccctcta aatcaccacg atcaaaagga acaagcatca agcacgcagc aatgcagctc 780
 aaaaagctta gccttagccac acccccacgg gaaacagcag tgattaacct ttagcaataa 840
 acgaaaagtt aactaagcta tactaaccoc agggttggtc aatttcgtgc cagccaccgc 900
 ggtcacacga ttaacccaag tcaatagaag ccggcgtaaa gagtgtttta gatcaccoccc 960
 tcccccaata agctaaaact cacctgagtt gtaaaaaact ccagttgaca caaaatagac 1020
 tacgaaaagtg gctttaacat atctgaacac acaatagcta agacccaaac tgggattaga 1080
 taccocacta tgcttagccc taaacctcaa cagttaaatc aacaaaactg ctgcaccaga 1140
 cactacgagc cacagcttaa aactcaagg accctggcggg gcttcatatc cctctagagg 1200
 agcctgttct gtaatcgata aaccccgatc aacctcacca cctcttgctc agcctatata 1260
 ccgccatctt cagcaaaccc tgatgaaggc tacaagtaa gcgcaagtac ccagtaaaag 1320

-continued

acgttaggtc aaggtgtagc ccatgaggtg gcaagaaatg ggctacattt tctaccccag	1380
aaaactacga tagcccttat gaaacttaag ggtcgaaggt ggatttagca gtaaaactaag	1440
agtagagtgc ttagttgaac agggccctga agcgcgtaca caccgcccgt caccctcctc	1500
aagtatactt caaaggacat ttaactaaaa cccctacgca tttatataga ggagacaagt	1560
cgtaacatgg taagtgtact ggaagtgc a cttggacgaa ccagagtgtg gcttaacaca	1620
aagcacccaa cttacactta ggagatttca acttaacttg accgctctga gctaaaacta	1680
gccccaaaoc cactccaact tactaccaga caaccttagc caaacattt acccaaataa	1740
agtataggcg atagaaattg aaacctggcg caatagatat agtaccgcaa gggaaagatg	1800
aaaaattata accaagcata atatagcaag gactaacccc tataccttct gcataatgaa	1860
ttaactagaa ataactttgc aaggagagcc aaagctaaga cccccgaaac cagacgagct	1920
acctaagaac agctaaaaga gcacacccgt ctatgtagca aaatagtggg aagatttata	1980
ggtagaggcg acaaacctac cgagcctggg gatagctggg tgtccaagat agaactctag	2040
ttcaacttta aatttgccca cagaacctc taaatcccct tgtaaattta actgtagtc	2100
caaagaggaa cagctctttg gacactagga aaaaacctg tagagagagt aaaaaattta	2160
acaccatag taggcctaaa agcagccacc aattaagaaa gcgttcaagc tcaacaccca	2220
ctacctaata aatcccaaac atataactga actcctcaca cccaattgga ccaatctatc	2280
accctataga agaactaatg ttagtataag taacatgaaa acattctcct ccgcataagc	2340
ctgcgtcaga ttaaaacact gaactgacaa ttaacagccc aatatctaca atcaaccaac	2400
aagtcattat tacctcact gtcaacccaa cacaggcatg ctcataagga aaggttaaaa	2460
aaagtaaaag gaactcggca aatccttacc cgcctgttta ccaaaaacat cacctctagc	2520
atcaccagta ttagaggcac cgctgocca gtgacacatg tttaacggcc gcggtagcct	2580
aaccgtgcaa aggtagcata atcacttgtt ccttaaatag ggacctgtat gaatggctcc	2640
acgagggttc agctgtctct tacttttaac cagtgaaatt gacctgcccg tgaagaggcg	2700
ggcataacac agcaagaoga gaagacocca tggagcttta atttattaat gcaaacagta	2760
cctaacaac ccacaggtcc taaactacca aacctgcatt aaaaatttcg gttggggcga	2820
cctcggagca gaacccaacc tccgagcagt acatgctaag acttcaccag tcaaaagcga	2880
ctactatact caattgatcc aataacttga ccaacggaac aagttaccct agggataaca	2940
gcgcaatcct attctagagt ccatatcaac aatagggttt acgacctcga tgttgatca	3000
ggacatcccg atgggtgacg cgtattataa ggttcgtttg ttcaacgatt aaagtctac	3060
gtgatctgag ttcagaccgg agtaatocag gtcggtttct atctacnttc aaattcctcc	3120
ctgtacgaaa ggacaagaga aataaggcct acttcacaaa gcgccttccc ccgtaaatga	3180
tatcatctca acttagtatt ataccacac ccaccaaga acagggtttg ttaagatggc	3240
agagcccggg aatcgcataa aacttaaac tttacagtca gaggttcaat tctcttctt	3300
aacaacatac ccatggccaa cctcctactc ctcatgtac ccattctaat cgcaatggca	3360
ttcctaattg ttaccgaacg aaaaattcta ggctatatac aactacgcaa aggccccaac	3420
gttgtaggcc cctacgggct actacaaccc ttcgctgacg ccataaaact cttcaccaaa	3480
gagcccctaa aacccgccac atctaccatc accctctaca tcaccgcccc gaccttagct	3540
ctcaccatcg ctcttctact atgaaccccc ctccccatac ccaaccccct ggtaaacctc	3600
aacctaggcc tcctatttat tctagccacc tctagcctag ccgtttactc aatcctctga	3660
tcagggtag catcaaac c aactacgcc ctgatcggcg cactgcgagc agtagcccaa	3720

-continued

acaatctcat atgaagtcac cctagccatc attctactat caacattact aataagtggc	3780
tcccttaacc tctccaccct tatcacaaca caagaacacc tctgattact cctgccatca	3840
tgacccttgg ccataaatatg atttatctcc acaactagcag agaccaaccg aacccccttc	3900
gaccttgccg aaggggagtc cgaactagtc tcaggcttca acatcgaata cgccgcaggc	3960
cccttcgccc tattcttcat agccgaatac acaaacatta ttataataaa caccctcacc	4020
actacaatct tcctaggaac aacatatgac gcactctccc ctgaactcta cacacatat	4080
tttgtcacca agaccctact tctaacctcc ctggttctat gaattcgaac agcatacccc	4140
cgattccgct acgaccaact catacacctc ctatgaaaaa acttctacc actcaccta	4200
gcattactta tatgatatgt ctccatcccc attacaatct ccagcattcc cctcaaacc	4260
taagaaatat gtctgataaa agagttactt tgatagagta aataatagga gcttaaacc	4320
ccttatttct aggactatga gaatcgaacc catccctgag aatccaaaat tctccgtgcc	4380
acctatcaca ccccatccta aagtaaggtc agctaaataa gctatcgggc ccataccccg	4440
aaaatggttg ttataccctt cccgtactaa ttaatcccct ggcccaacc gtcactact	4500
ctaccatctt tgcaggcaca ctcatcacag cgctaagctc gcaactgattt tttacctgag	4560
taggcctaga aataaacatg cttagcttta ttccagttct aaccaaaaaa ataaacctc	4620
gttccacaga agctgccatc aagtatttcc tcacgcaagc aaccgcatcc ataactctc	4680
taatagctat cctcttcaac aatatactct cgggacaatg aaccataacc aatactacca	4740
atcaatactc atcattaata atcataatag ctatagcaat aaaactagga atagccccct	4800
ttcacttctg agtcccagag gttacccaag gcaccctct gacatccggc ctgcttctc	4860
tcacatgaca aaaactagcc cccatctcaa tcatatacca aatctctccc tcaactaacg	4920
taagccttot cctcactctc tcaatcttat ccatcatagc aggcagtga ggtggattaa	4980
accaaaccga gctacgcaaa atcttagcat actcctcaat taccacata ggatgaataa	5040
tagcagttct accgtacaac cctaacataa ccattcttaa tttactatt tatattatcc	5100
taactactac cgcattccta ctactcaact taaactccag caccacgacc ctactactat	5160
ctcgcacctg aaacaagcta acatgactaa cacccttaat tccatccacc ctctctccc	5220
taggaggcct gcccccgcta accggctttt tgcccaaatg ggccattatc gaagaattca	5280
caaaaaacaa tagcctcctc atccccacca tcatagccac catcaccctc cttaacctct	5340
acttctacct acgcctaata tactccacct caatcacact actcccata tctaacaacg	5400
taaaaataaa atgacagttt gaacatacaa aaccaccccc attcctcccc aactcatcg	5460
cccttaccac gctactccta cctatctccc cttttatact aataacttta tagaaattta	5520
ggtaaatac agaccaagag ccttcaaagc cctcagtaag ttgcaatact taatttctgt	5580
aacagctaag gactgcaaaa cccactctg catcaactga acgcaaatca gccactttaa	5640
ttaagctaag cccttactag accaatggga cttaaaccca caaacactta gttaacagct	5700
aagcacccta atcaactggc ttcaatctac ttctccgcc gccgggaaaa aaggcgggag	5760
aagccccggc aggtttgaag ctgcttctc gaatttgcaa ttcaatatga aatcactctc	5820
ggagctggta aaaagaggcc taaccctgt ctttagattt acagtccaat gcttactca	5880
gccattttac ctcaccccc a ctgatgttcg ccgaccgttg actattctct acaaaccaca	5940
aagacattgg aacactatac ctattattcg gcgcatgagc tggagtccta ggcacagctc	6000
taagcctctt tattcgagcc gagctgggcc agccaggcaa ccttctaggt aacgaccaca	6060
tctacaacgt tatcgtcaca gcccatgcat ttgtaataat cttcttcata gtaataocca	6120

-continued

tcataatcgg	aggctttggc	aactgactag	ttccccta	aatcggtgcc	cccgatatgg	6180
cgtttccccg	cataaacaac	ataagcttct	gactcttacc	tcctctctc	ctactcctgc	6240
tcgcatctgc	tatagtgag	gocggagcag	gaacaggtg	aacagtctac	cctcccttag	6300
cagggaaacta	ctcccacct	ggagcctccg	tagacctaac	catcttctcc	ttacacctag	6360
caggtgtctc	ctctatctta	ggggccatca	atctcatcac	aacaattatc	aatataaaac	6420
cccctgceat	aaccecaatac	caaacgcccc	tctctgtctg	atccgtccta	atcacagcag	6480
tctactttct	cctatctctc	ccagtcctag	ctgctggcat	cactatacta	ctaacagacc	6540
gcaacctcaa	caccaccttc	ttcgaccccc	ccggaggagg	agacccatt	ctataccaac	6600
acctattctg	atctttcggg	cacctgaag	tttatattct	tatcctacca	ggcttcggaa	6660
taatctcca	tattgtaact	tactactccg	gaaaaaaga	accatttggg	tacataggta	6720
tggctcgagc	tatgatata	attggcttcc	tagggtttat	cggtgtgagca	caccatata	6780
ttacagtagg	aatagacgta	gacacacgag	catatctcac	ctccgtacc	ataatcatcg	6840
ctatccccac	cggcgtcaaa	gtatcttagct	gactcgcac	actccacgga	agcaatatga	6900
aatgatctgc	tgcagtgtc	tgagccctag	gattcatctt	tcttttcacc	gtaggtggcc	6960
tgactggcat	tgtattagca	aactcatcac	tagacatcgt	actacacgac	acgtactacg	7020
ttgtagccca	cttccactat	gtcctatcaa	taggagctgt	atctgcatc	ataggaggct	7080
tcattcactg	atctccccta	ttctcaggct	acacctaga	ccaaacctac	gccaaaatcc	7140
atctcactat	catatctc	ggcgtaaac	taactttctt	cccacaacac	ttctcggcc	7200
tatccggaat	gccccgagct	tactcggact	accccgatgc	atacaccaca	tgaaacatcc	7260
tatcatctgt	aggctcattc	atctctctaa	cagcagtaat	attaataatt	ttcatgattt	7320
gagaagcctt	cgcttcgaag	cgaaaagtcc	taatagtaga	agaacctccc	ataaacctgg	7380
agtgactata	tggatgcccc	ccacctacc	acacattcga	agaacctgta	tacataaaat	7440
ctagacaaaa	aaggaaggaa	tcgaaccccc	caaagctggt	ttcaagccaa	ccccatggcc	7500
tccatgactt	tttcaaaaag	gtattagaaa	aaccatttca	taactttgtc	aaagttaaat	7560
tataggctaa	atcctatata	tcttaatggc	acatgcagcg	caagtaggtc	tacaagacgc	7620
tacttcccct	atcatagaag	agcttatcac	ctttcatgat	cacgcccctca	taatcatttt	7680
ccttatctgc	ttcctagctc	tgtatgcct	tttctcaaca	ctcacaacaa	aactaactaa	7740
tactaacatc	tcagacgctc	aggaaataga	aaccgtctga	actatcctgc	ccgcatcat	7800
cctagtcctc	atcgccctcc	catccctacg	catcctttac	ataacagacg	aggtcaacga	7860
tcctccctt	accatcaaat	caattggcca	ccaatggtac	tgaacctacg	agtacaccga	7920
ctacggcgga	ctaactttca	actcctacat	acttccccca	ttattcctag	aaccaggcga	7980
cctgcgactc	cttgacgttg	acaatcgagt	agtactcccg	attgaagccc	ccattcgtat	8040
aataattaca	tcacaagacg	tcttgactc	atgagctgtc	cccacattag	gcttaaaaac	8100
agatgcaatt	cccggacgtc	taaaccaaac	cactttcacc	gctacacgac	cgggggtata	8160
ctacggctca	tgctctgaaa	tctgtggagc	aaaccacagt	ttcatgcccc	tcgtcctaga	8220
attaattccc	ctaaaaatct	ttgaaatagg	gcccgtatct	accctatagc	acccctctca	8280
ccccctctag	agccccactgt	aaagctaaact	tagcattaac	cttttaagtt	aaagattaag	8340
agaaccaaca	cctctttaca	gtgaaatgcc	ccaactaaat	actaccgtat	ggcccacat	8400
aattaccccc	atactcctta	cactattcct	catcacccaa	ctaaaaatat	taaacacaaa	8460
ctaccaccta	cctccctcac	caaagcccat	aaaaataaaa	aattataaca	aacctgaga	8520

-continued

acccaaatga	acgaaaatct	gttcgcttca	ttcattgccc	ccacaatcct	aggcctaccc	8580
gccgcagtac	tgatcattct	atttccccct	ctattgatcc	ccacctcaa	atatctcatc	8640
aacaaccgac	taatcaccac	ccaacaatga	ctaataaac	taacctcaa	acaaatgata	8700
accatacaca	acactaaagg	acgaacctga	tctcttatac	tagtatecct	aatcattttt	8760
attgccacaa	ctaacctcct	cggactcctg	cctcactcat	ttacaccaac	cacccaacta	8820
tctataaacc	tagccatggc	catccccctt	tgagcgggca	cagtgattat	aggctttcgc	8880
tctaagatta	aaaatgcctt	agcccacttc	ttaccacaag	gcacacctac	acccttatc	8940
cccatactag	ttattatoga	aaccatcagc	ctactcattc	aaccaatagc	cctggcgcgt	9000
cgccaaaccg	ctaacattac	tgcaggccac	ctactcatgc	acctaattgg	aagcgccacc	9060
ctagcaatat	caaccattaa	ccttccctct	acacttatca	tcttcacaat	tctaattcta	9120
ctgactatcc	tagaaatogc	tgtcgcctta	atccaagcct	acgttttcac	acttctagta	9180
agcctctacc	tgcacgacaa	cacataatga	cccaccaatc	acatgcctat	catatagtaa	9240
aaccagccc	atgaccctca	acagggggcc	tctcagcctt	cctaatagacc	tccggcctag	9300
ccatgtgatt	tcacttccac	tccataacgc	tctctatact	aggcctacta	accaacacac	9360
taaccatata	ccaatgatgg	cgcgatgtaa	cacgagaaag	cacataccaa	ggccaccaca	9420
caccacctgt	ccaaaaaggc	cttcgatacg	ggataatcct	atttattacc	tcagaagttt	9480
ttttcttcgc	aggatttttc	tgagcctttt	accactccag	cctagcccct	accccccaat	9540
taggagggca	ctggccccca	acaggcatca	ccccgctaaa	tcccctagaa	gtcccactcc	9600
taaacacatc	cgtattactc	gcatcaggag	tatcaatcac	ctgagctcac	catagtctaa	9660
tagaaaacaa	ccgaaaccaa	ataatcaag	cactgcttat	tacaatttta	ctgggtctct	9720
attttaccct	cctacaagcc	tcagagtaact	tcgagtctcc	cttcaccatt	tccgacggca	9780
tctacggctc	aacatttttt	gtagccacag	gcttccacgg	acttcacgtc	attattggct	9840
caactttcct	cactatctgc	ttcatccgcc	aactaatatt	tcactttaca	tccaaacatc	9900
actttggctt	cgaagccgcc	gctgatact	ggcattttgt	agatgtgggt	tgactatttc	9960
tgatgtctc	catctattga	tgagggctct	actcttttag	tataaatagt	accgttaact	10020
tccaattaac	tagttttgac	aacattcaaa	aaagagtaat	aaacttcgcc	ttaattttta	10080
taatcaacac	cctcctagcc	ttactactaa	taattattac	attttgacta	ccacaactca	10140
acggctacat	agaaaaatcc	acccttacg	agtgcggctt	cgacctata	tccccgccc	10200
gcgtcccttt	ctccataaaa	ttcttcttag	tagctattac	cttcttatta	tttgatctag	10260
aaattgcctt	ccttttaacc	ctaccatgag	ccctacaaac	aactaacctg	ccactaatag	10320
ttatgtcatc	cctcttatta	atcatcatcc	tagccctaag	tctggcctat	gagtgactac	10380
aaaaaggatt	agactgaacc	gaattgggtat	atagtttaaa	caaaacgaat	gatttcgact	10440
cattaaatta	tgataatcat	atttacccaaa	tgccccctcat	ttacataaat	attatactag	10500
catttaccat	ctcacttcta	ggaatactag	tatctcctc	acacctcata	tcctccctac	10560
tatgcctaga	aggaataata	ctatcgcctg	tcattatagc	tactctcata	accctcaaca	10620
cccactccct	cttagccaat	attgtgccta	ttgccatact	agtctttgcc	gcctgcgaag	10680
cagcgggtggg	cctagcccta	ctagtctcaa	tctccaacac	atatggccta	gactacgtac	10740
ataacctaaa	cctactccaa	tgctaaaact	aatcgtccca	acaattatat	tactaccact	10800
gacatgactt	tccaaaaaac	acataatttg	aatcaacaca	accaccacaca	gcctaattat	10860
tagcatcatc	cctctactat	tttttaacca	aatcaacaac	aacctattta	gctgttcccc	10920

-continued

```

aaccttttcc tccgaccccc taacaacccc cctcctaata ctaactacct gactcctacc 10980
cctcacaaac atggcaagcc aacgccactt atccagtgaa ccaactatcac gaaaaaaact 11040
ctacctctct atactaatct cctacaaaat ctccttaatt ataacattca cagccacaga 11100
actaatcata ttttatatct tcttcgaaac cacacttacc cccaccttgg ctatcatcac 11160
ccgatgaggg aaccagccag aacgcctgaa cgcaggcaca tacttccat tctacaccct 11220
agtaggctcc ctteccctac tcategcact aatttacct cacaacaccc taggctcact 11280
aaacattcta ctactcactc tcaactgcca agaactatca aactcctgag ccaacaactt 11340
aatatgacta gcttacacaa tagcttttat agtaaagata cctctttacg gactccactt 11400
atgactccct aaagcccatg tcgaagcccc catcgctggg tcaatagtac ttgccgcagt 11460
actcttaaaa ctaggcgggt atggataat acgcctcaca ctcatctca acccctgac 11520
aaaacacata gcctaccocct tccttgtact atccctatga ggcataatta taacaagctc 11580
catctgccta cgacaaaacag acctaaaaac gctcattgca tactcttcaa tcagccacat 11640
agccctcgta gtaacagcca ttctcatcca aaccocctga agcttcaccg gcgcagtcac 11700
tctcataatc gccccagggc ttacatcctc attactatcc tgcctagcaa actcaaaacta 11760
cgaacgcact cacagtcgca tcataatcct ctctcaagga cttcaaaactc tactcccaact 11820
aatagctttt tgatgacttc tagcaagcct cgctaaccct gccttaccoc ccaactattaa 11880
cctactggga gaactctctg tgctagtaac cacgttctcc tgatcaaata tcactctcct 11940
acttacagga ctcaacatac tagtcacagc cctatactcc ctctacatat ttaccacaac 12000
acaatggggc tcaactcacc accacattaa caacataaaa ccctcattca cagagaaaa 12060
caccctcatg ttcatacacc tatcccccat tctcctccta tcctcaacc ccgacatcat 12120
taccgggttt tcctcttcta aatatagttt aacaaaaaca tcagattgtg aatctgacaa 12180
cagaggctta cgaccctta tttaccgaga aagctcaca gaactgctaa ctcatgcccc 12240
catgtctaac aacatggctt tctcaacttt taaaggataa cagctatcca ttggtcttag 12300
gccccaaaaa ttttgggtga actccaaata aaagtaataa ccatgcacac tactataacc 12360
accctaacc tgacttcocct aattcccccc atccttacca ccctogttaa ccctaacaaa 12420
aaaaactcat acccccatta tgtaaaatcc attgtogcat ccacctttat tatcagtctc 12480
ttccccacaa caatattcat gtccttagac caagaagtta ttatctcgaa ctgacactga 12540
gccacaacc aaacaaccca gctctccta agcttcaaac tagactactt ctccataata 12600
ttcatccctg tagcattggt cgttacatgg tccatcatag aattctcact gtgatata 12660
aactcagacc caaacattaa tcagttcttc aaatatctac tcatcttccct aattaccata 12720
ctaactctag ttaccgctaa caacctatc caactgttca tcggctgaga gggcgttaga 12780
attatctcct tcttgcctat cagttgatga tacgcccgag cagatgcca cacagcagcc 12840
attcaagcaa tcctatacaa ccgtatggc gatatcggtt tcatctcgc cttagcatga 12900
tttatcctac actccaactc atgagacca caacaaatag cccttctaaa cgctaatcca 12960
agcctcacc cactactagg cctcctccta gcagcagcag gcaaatcagc ccaattaggt 13020
ctccaccocct gactccctc agccatagaa ggccccacc cagtctcagc cctactccac 13080
tcaagcacta tagttgtagc aggaatcttc ttactcatcc gcttcacccc cctagcagaa 13140
aatagccac taatccaaac tctaacacta tgcttagggc ctatcaccac tetgttgcga 13200
gcagctctgc cccttacaca aatgacatc aaaaaaatcg tagccttctc cacttcaagt 13260
caactaggac tcataatagt tacaatggc atcaaccaac cacacctagc attcctgcac 13320

```

-continued

atctgtaccc	acgccttctt	caaagccata	ctatttatgt	gctccgggtc	catcatccac	13380
aaccttaaca	atgaacaaga	tattcgaaaa	ataggaggac	tactcaaac	catacctctc	13440
acttcaacct	ccctcacat	tggcagccta	gcattagcag	gaataccttt	cctcacaggt	13500
ttctactcca	aagaccacat	catcgaaacc	gcaaacatat	catacaciaa	cgctgagcc	13560
ctatctatta	ctctcatgc	tacctcctg	acaagcgct	atagcactcg	aataattctt	13620
ctcacctaa	caggtaacc	tcgcttccc	acccttacta	acattaacga	aaataacccc	13680
accctactaa	acccattaa	acgcctggca	gccggaagcc	tattcgcagg	atttctcatt	13740
actaacaaca	tttccccgc	atccccctc	caacaacaa	tccccctca	cctaaaactc	13800
acagcctcg	ctgtcacttt	cctaggactt	ctaacagccc	tagacctcaa	ctacctaacc	13860
aacaaactta	aaataaaatc	cccactatgc	acattttatt	tctccaacat	actcggattc	13920
taccctagca	tcacacaccg	cacaatcccc	tatctaggcc	ttcttaagag	ccaaaacctg	13980
cccctactcc	tcctagacct	aacctgacta	gaaaagctat	tacctaaaa	aatttcacag	14040
caccaaactc	ccacctccat	catcacctca	acccaaaaag	gcataattaa	actttacttc	14100
ctctctttct	tcttcccact	catcctaacc	ctactcctaa	tcacataacc	tattcccccg	14160
agcaatctca	attacaatat	atacaccaac	aaacaatggt	caaccagtaa	ctactactaa	14220
tcaacgccc	taatcataca	aagccccgc	accaatagga	tcctccgaa	tcaaccctga	14280
cccctctct	tcataaatta	ttcagcttcc	tacactatta	aagtttacca	caaccaccac	14340
cccctcatac	tctttcaacc	acagcaccia	tcttaacctc	atcgtaacc	ccactaaaac	14400
actcaccaag	acctcaacc	ctgaccccc	tgctcagga	tactcctcaa	tagccatcgc	14460
tgtagtatat	ccaagacaa	ccatcattcc	ccctaaataa	attaaaaaaa	ctattaaacc	14520
catataacct	ccccaaaat	tcagaataat	aacacaccgc	accacaccgc	taacaatcaa	14580
tactaaacc	ccataaatag	gagaaggctt	agaagaaaac	cccacaaacc	ccattactaa	14640
accacactc	aacagaaaca	aagcatacat	cattattctc	gcacggacta	caaccacgac	14700
caatgatatg	aaaaaccatc	ggtgtatttc	aactacaaga	acaccaatga	ccccaatagc	14760
caaaactaac	cccctaataa	aattaattaa	ccactcattc	atcgacctcc	ccccccatc	14820
caacatctcc	gcctgatgaa	acttcggctc	actccttggc	gcctgcctga	tcctccaaat	14880
caccacagga	ctattctctag	ccatgcacta	ctcaccagac	gcctcaaccg	ccttttctc	14940
aatcgcccac	atcactcgag	acgtaaatta	tggtgaatc	atccgctacc	ttcacgccc	15000
tgggcgctca	atattcttta	tctgcctctt	cctacacatc	gggcgaggcc	tatattacgg	15060
atcattttctc	tactcagaaa	cctgaaacat	cggcattatc	ctcctgcttg	caactatage	15120
aacagccttc	ataggctatg	tcctcccgty	aggccaata	tcattctgag	gggcccacgt	15180
aattacaaac	ttactatccg	ccatcccata	cattgggaca	gacctagttc	aatgaatctg	15240
aggaggctac	tcagtagaca	gtcccacct	cacacgatto	tttaaccttc	acttcatctt	15300
gcccttcatt	attgcagccc	tagcaaacct	ccactccta	ttcttgacg	aaacgggatc	15360
aaacaacccc	ctaggaatca	cctcccattc	cgataaaatc	accttccacc	cttactacac	15420
aatcaagac	gccctcggct	tacttctctt	ccttctctcc	ttaatgacat	taaacctatt	15480
ctcaccagac	ctcctaggcg	accagacaa	ttatacccta	gccaacccct	taaacacccc	15540
tccccacatc	aagcccgaat	gatatttctt	atcgcctac	acaattctcc	gatccgtccc	15600
taacaaacta	ggaggcgtcc	ttgcctatt	actatccatc	ctcatcctag	caataatccc	15660
catctccat	atatccaaac	aacaaagcat	aatatttccg	ccactaagcc	aatcacttta	15720

-continued

```

ttgactccta gccgcagacc tcctcattct aacctgaatc ggaggacaac cagtaagcta 15780
cccttttacc atcattggac aagtagcatc cgtactatac ttcacaacaa tcctaatacct 15840
aataccaact atctccctaa ttgaaaacaa aatactcaa tgggcctgtc cttgtagtat 15900
aaactaatac accagtcttg taaaccggag atgaaaacct tttccaagg acaaatcaga 15960
gaaaaagtct ttaactccac cattagcacc caaagctaag attctaattt aaactattct 16020
ctgttccttc atggggaagc agatttgggt accaccaag tattgactca cccatcaaca 16080
accgctatgt atttctgaca ttactgccag ccacatgaa tattgtacgg taccataaat 16140
acttgaccac ctgtagtaca taaaaacca atccacatca aaacccctc cccatgctta 16200
caagcaagta cagcaatcaa cctcaacta tcacacatca actgcaactc caaagccacc 16260
cctcaccac taggatacca acaaacctac ccacccttaa cagtacatag tacataaagc 16320
catttaccgt acatagcaca ttacagtcaa atccccttc gtcccctgg atgaccccc 16380
tcagataggg gtcccctgac caccatcctc cgtgaaatca atatcccga caagagtgt 16440
actctcctcg ctccggggccc ataacacttg ggggtagcta aagtgaactg tatccgacat 16500
ctggttccta cttcagggtc ataagccta aatagcccac acgttcccct taaataagac 16560
atcacgatg                                     16569
    
```

```

<210> SEQ ID NO 9
<211> LENGTH: 22
<212> TYPE: DNA
<213> ORGANISM: Artificial Sequence
<220> FEATURE:
<223> OTHER INFORMATION: synthetic primer forward 3.4 kb deleted
sequence
    
```

<400> SEQUENCE: 9

```

cccactcatc acctaaacct ac                                     22
    
```

```

<210> SEQ ID NO 10
<211> LENGTH: 20
<212> TYPE: DNA
<213> ORGANISM: Artificial Sequence
<220> FEATURE:
<223> OTHER INFORMATION: synthetic primer reverse 3.4 kb deleted
sequence
    
```

<400> SEQUENCE: 10

```

ggtaggagtc aggtagttag                                     20
    
```

What we claim is:

1. A method of detecting a cancer in an individual comprising;

- a) extracting mitochondrial DNA, mtDNA, from a biological sample from the individual;
- b) quantifying the amount of a mtDNA deletion in the sample, the deletion having a nucleic acid sequence as set forth in SEQ ID NO: 1, the step of quantifying comprising the use of a pair of amplification primers, wherein one of the pair of amplification primers is adapted to bind to a rejoining site of the deletion after the deletion has re-circularized;
- c) comparing the amount of the deletion in the sample to at least one known reference value.

2. The method of claim 1, wherein the at least one known reference value is the amount of the deletion in a reference sample of mtDNA from known non-cancerous tissue or body fluid.

3. The method of claim 1, wherein the at least one known reference value is the amount of the deletion in a reference sample of mtDNA from known cancerous tissue or body fluid.

4. The method of claim 1, wherein the step of quantifying is conducted using real-time PCR.

5. The method of claim 4, wherein the one of the pair of amplification primers has a nucleic acid sequence as set forth in SEQ ID NO: 9.

6. The method of claim 1, wherein the one of the pair of amplification primers has a nucleic acid sequence as set forth in SEQ ID NO: 9.

7. The method of claim 1, wherein the cancer is prostate cancer.

8. The method of claim 1, wherein the cancer is breast cancer.

9. The method of claim 1, wherein the biological sample is a body tissue or a body fluid.

41

10. The method of claim 1, wherein the biological sample is breast tissue, prostate tissue, prostate massage fluid, or urine.

11. The method of claim 4, wherein the reference value is a cycle threshold.

12. A method of monitoring an individual for the development of a cancer, the method comprising:

- a) extracting mitochondrial DNA, mtDNA, from a biological sample obtained from the individual at a first time point;
- b) quantifying the amount of a mtDNA deletion in the sample, the deletion having a nucleic acid sequence as set forth in SEQ ID NO: 1, the step of quantifying comprising the use of a pair of amplification primers, wherein one of the pair of amplification primers is adapted to bind to a rejoining site of the deletion after the deletion has re-circularized;
- c) repeating steps a) to b) at one or more second time points;

wherein an increasing level of the deletion over time is indicative of the presence or development of the cancer.

13. The method of claim 12 further comprising: (i) comparing the amount of the deletion in the sample to the amount of the deletion in a reference sample of mtDNA from known non-cancerous tissue or body fluid; and/or (ii) comparing the amount of the deletion in the sample to the amount of the deletion in a reference sample of mtDNA from known cancerous tissue or body fluid.

14. The method of claim 12, wherein the step of quantifying is conducted using real-time PCR.

15. The method of claim 12, wherein the one of the pair of amplification primers has the nucleic acid sequence set forth in SEQ ID NO: 9.

16. The method of claim 12, wherein the cancer is prostate cancer.

17. The method of claim 12, wherein the cancer is breast cancer.

18. The method of claim 12, wherein the biological sample is a body tissue or a body fluid.

42

19. The method of claim 12, wherein the biological sample is breast tissue, prostate tissue, prostate massage fluid, or urine.

20. A kit for detecting a cancer in a subject, the kit comprising a pair of PCR primers for amplifying a target region of mitochondrial DNA, mtDNA, in a biological sample obtained from the subject, said target region comprising a region of the mtDNA having a deletion spanning approximately nucleotides 10744 and 14124 of the mtDNA genome.

21. The kit of claim 20, wherein one primer of the pair of primers is adapted to bind to a region of the mtDNA comprising a splice joining opposite ends of the mtDNA sequence after removal of the deletion.

22. The kit of claim 20, wherein one primer of the pair of primers has a nucleic acid sequence as set forth in SEQ ID NO: 2.

23. The kit of claim 20, wherein the cancer is breast cancer or prostate cancer.

24. The kit of claim 20, further comprising reagents and/or instructions.

25. A kit for detecting a cancer in a subject, the kit comprising a pair of PCR primers for amplifying a mitochondrial DNA, mtDNA, deletion in a biological sample obtained from the subject, said deletion having a nucleic acid sequence as set forth in SEQ ID NO: 1, wherein one primer of the pair of primers is adapted to bind to a region of the deletion comprising a rejoining site of the deletion after the deletion has re-circularized.

26. The kit of claim 25, wherein the one primer of the pair of primers has a nucleic acid sequence as set forth in SEQ ID NO: 2.

27. The kit of claim 25, wherein the cancer is breast cancer or prostate cancer.

28. The kit of claim 25, further comprising reagents and/or instructions.

* * * * *